



PROLINE
Static hoods
H=380mm and 530mm



VENTILATION OF PROFESSIONAL KITCHENS, A SPECIALIST AFFAIR.

PROLINE STATIC

DESIGN / MANUFACTURE

The PROLINE range is single-block:

— from 1000 to 3000 mm.

Longer lengths are created by assembling single block units screwed together, with no visible fixings on the outer faces.

PROLINE hoods are available in 2 heights and 2 models:

PROLINE 38T:

extractor height 380 / front face height = 230mm

PROLINE 38R:

extractor height 380 / front face height = 380mm

PROLINE 53T:

extractor height 530 / front face height = 380mm

PROLINE 53R:

extractor height 530 / front face height = 530mm

The production method used, with folds on all visible parts, gives a finish that is free of burrs and protruding parts.

All visible parts are made from austenitic stainless steel, brushed finish 220 grade on one side, with protective PVC on the exterior face.

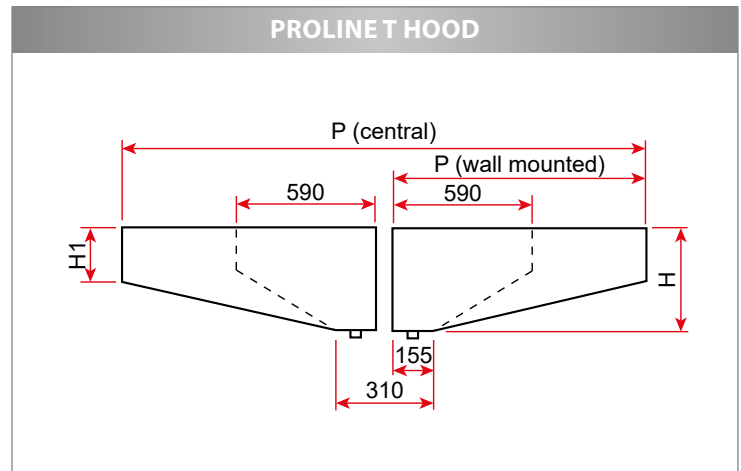
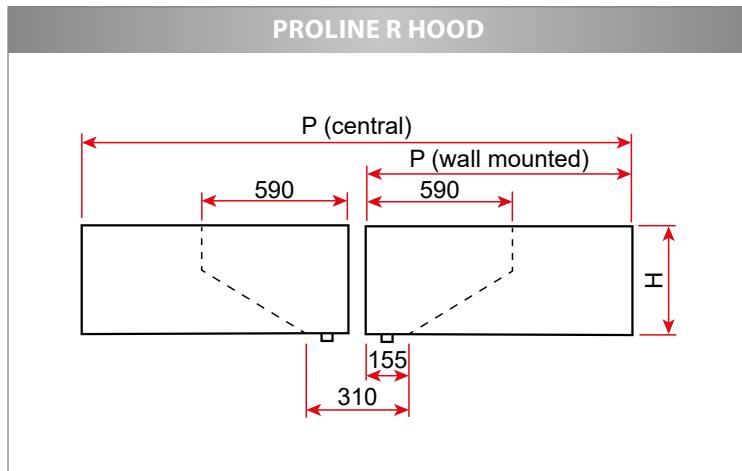
The sides are assembled using heat-welded pins and nuts.

Mesh filters 398x498x25mm with stainless steel frame and handle, galvanised medium (flow of 1100m³/h per filter). Optionally, full stainless steel filters (flow of 1100m³/h per filter), baffle filters (flow of 600m³/h per filter) or HE filter (flow of 500 m³/h). Stainless steel 398x498x25mm neutral plates.

Each single block unit is leak tight and fitted with a G3/8 stainless steel purge plug in its lower part to drain off grease and condensates.

The central hoods are composed of two back to back elements with a central separator, to be assembled together using the supplied hardware.

DIMENSIONS / WEIGHT



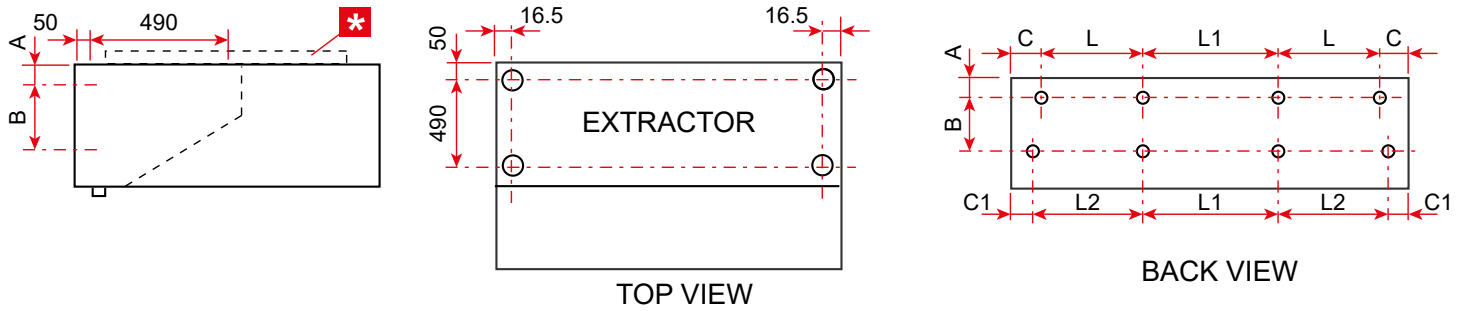
PROLINE 38 - H=380 mm								
H (mm)	380	380	380	380	380	380	380	380
H1 (mm)	-	230	-	230	-	230	-	230
Wall mounted								
Model	09		11		13		15	
	R	T	R	T	R	T	R	T
D (mm)	915		1120		1240		1445	
Weight (kg/m)	30	29	33	32	35	34	38	37
Central								
Model	18		22		26		30	
	R	T	R	T	R	T	R	T
D (mm)	1830		2240		2480		2890	
Weight (kg/m)	60	58	66	64	70	68	76	74

PROLINE 53 - H=530 mm										
H (mm)	-	530	530	530	530	530	530	530	530	530
H1 (mm)	-	380	-	380	-	380	-	380	-	380
Wall mounted										
Model	07		09		11		13		15	
	R	T	R	T	R	T	R	T	R	T
D (mm)	-	750	915		1120		1240		1445	
Weight (kg/m)	-	31	35	34	38	37	41	40	44	43
Central										
Model	14		18		22		26		30	
	R	T	R	T	R	T	R	T	R	T
D (mm)	-	1500	1830		2240		2480		2890	
Weight (kg/m)	-	62	70	68	76	74	82	80	88	86



PROLINE STATIC

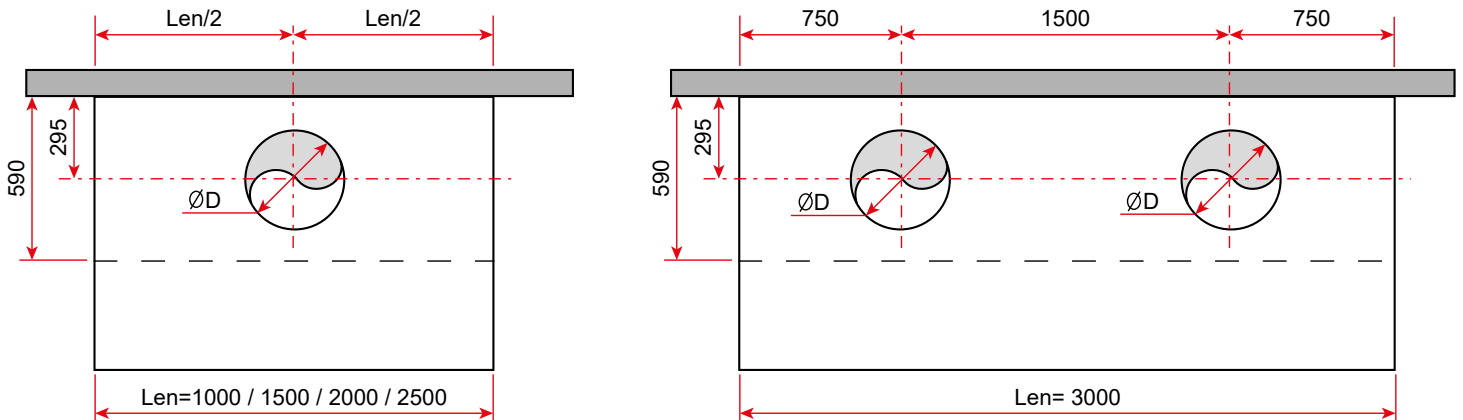
FIXING POINTS



* Bracket height 30mm to assemble two modules

Length (mm)	PROLINE 38		PROLINE 53		C (mm)	C1 (mm)	L (mm)	L1 (mm)	L2 (mm)
	A (mm)	B (mm)	A (mm)	B (mm)					
1000	30	318	30	468	51	32.5	-	-	-
1500							699	-	715
2000							626	645	645
2500							793	811	811
3000							715	2x734	734

CONNECTIONS: Diameter and recommended number of hoops



Length (mm)	500	1000	1500	2000	2500	3000*
ØD (mm)	315	315	355	400	400	355

* Length 3000 mm single block
Drilling and connection hoops as an option