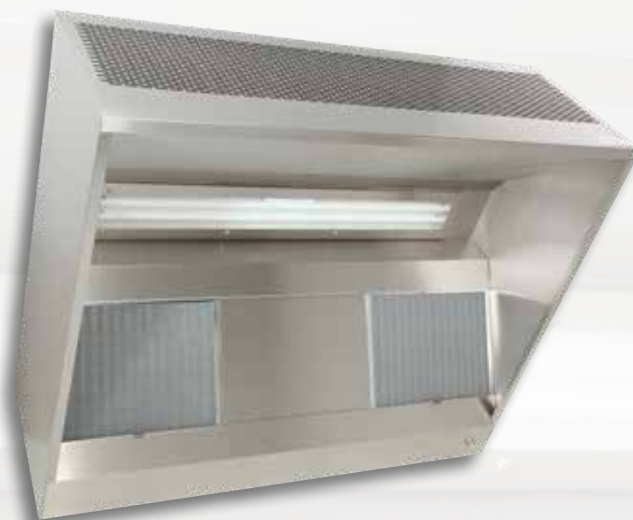




ISO 9001
BUREAU VERITAS
Certification



OPAFLUX

Compensation hood H=530mm



VENTILATION OF PROFESSIONAL KITCHENS, A SPECIALIST AFFAIR.

OPAFLUX

DESIGN / MANUFACTURE

| The OPAFLUX range is single-block:

— from 1000 to 2500mm for wall mounted hoods
(single block up to 3000mm possible as an option)

— from 1000 to 3000mm for central hoods

Longer lengths are created by assembling single block units screwed together, with no visible fixings on the outer faces and in the extraction volume.

| OPAFLUX hoods are available at a height of 530 mm.

| **There is a support profile built into each end of the single block unit**, making it possible to suspend it from ØM8 threaded rods.

| **The production method used, with folds on all visible parts**, gives a finish that is free of burrs and protruding parts.

| **All visible parts are manufactured from AISI 304 austenitic stainless steel** (CN 18-10), brushed finish on both sides, 220 grade with PVC protection.

| **The design of the ends avoids all markings on the outer faces.** They are assembled using heat-welded pins and nuts.

| **Mesh filters** 398x498x25mm with stainless steel frame and handle, galvanised medium (flow of 1100m³/h per filter). **Optionally, full stainless steel filters** (flow of 1100m³/h per filter), **baffle filters** (flow of 600m³/h per filter) or **HE filters** (flow of 500m³/h). Stainless steel 398x498x25mm neutral plates.

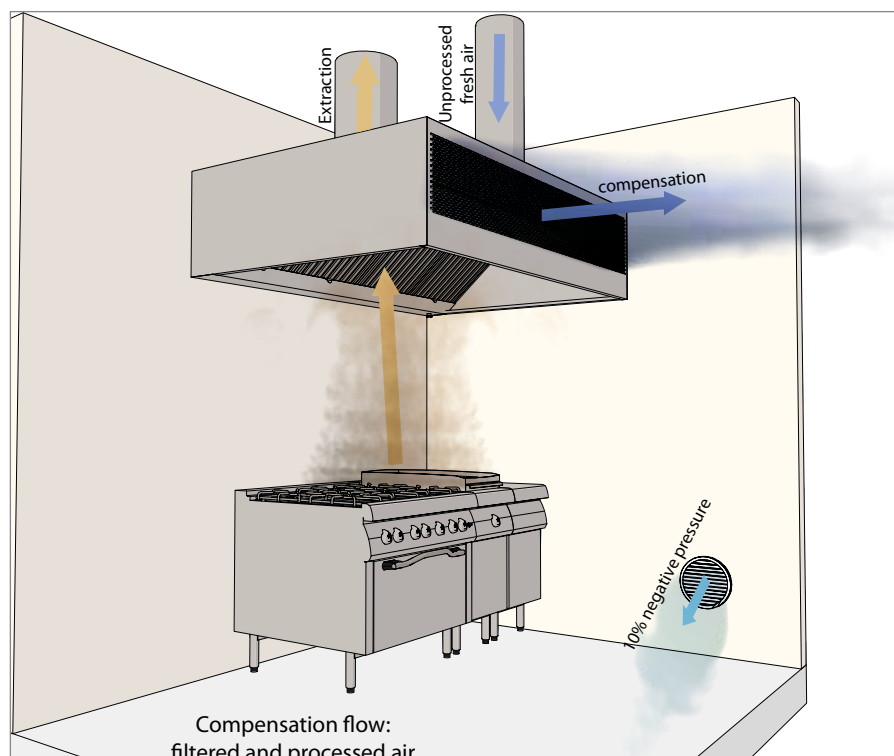
| Each single block unit is fitted with a G3/8 stainless steel purge plug in its lower part to drain off grease and condensates.

| **The compensation plenum is insulated** with M1 foam. The front face has a flow diffuser system.

| Access to this plenum is made easy by **removable panels** making module assembly easier.

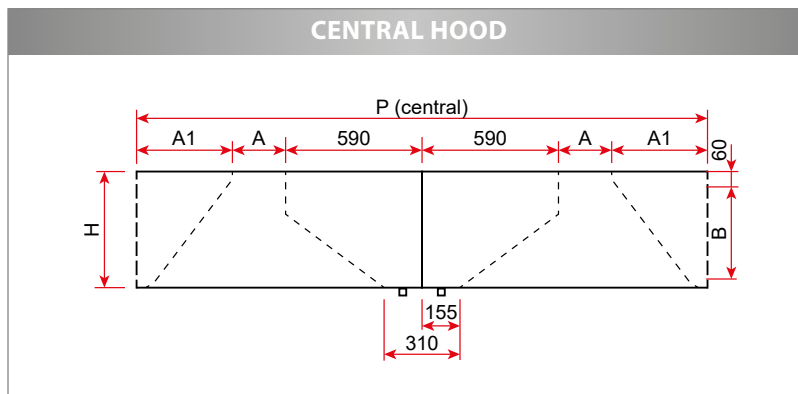
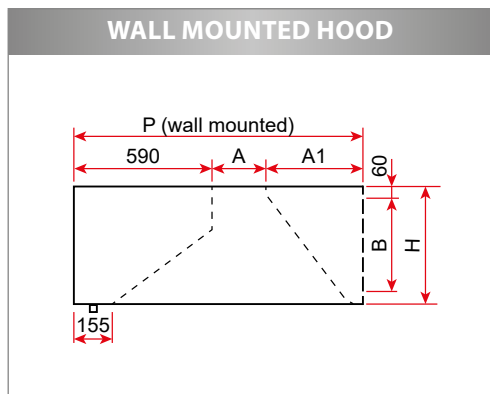
| The central hoods are composed of two back to back elements with a central separator, to be assembled together using the supplied hardware.

PRINCIPLE DIAGRAM



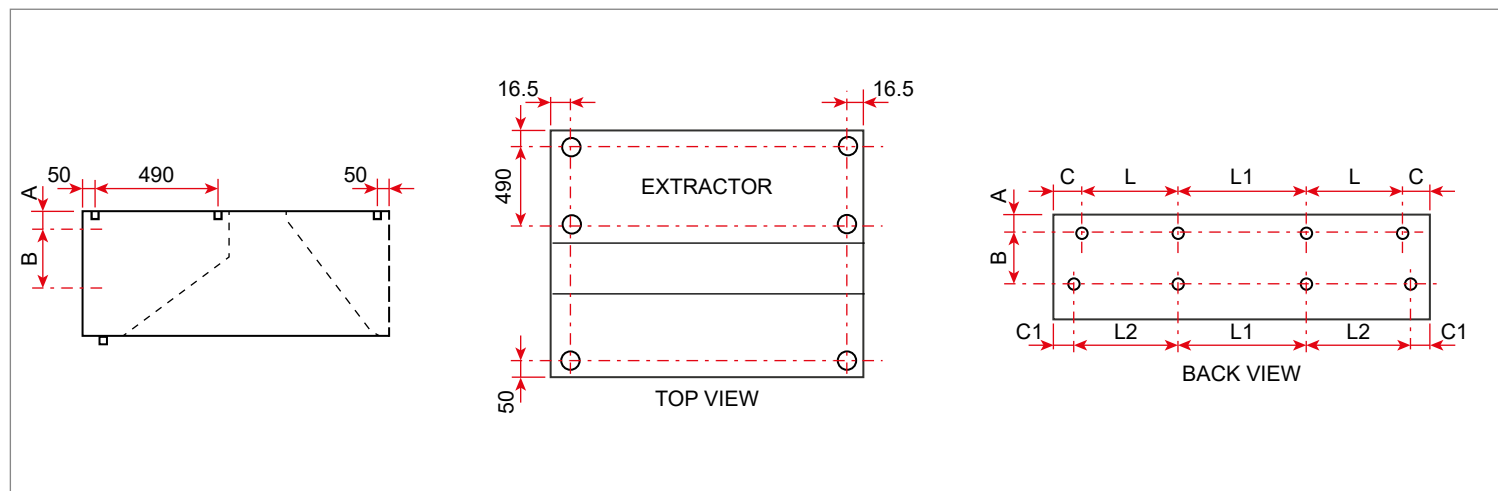
OPAFLUX

DIMENSIONS / WEIGHT



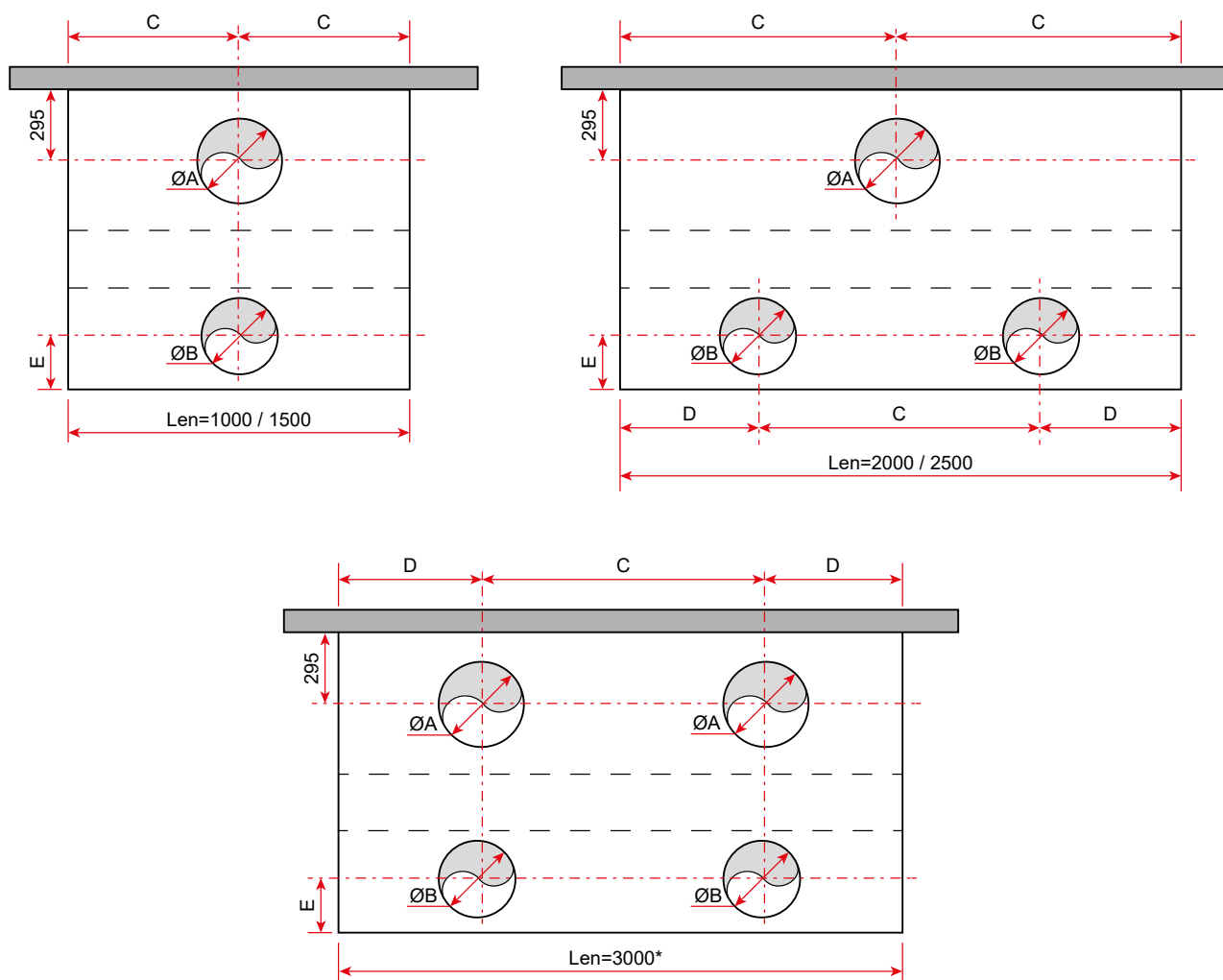
OPAFLUX H=530 mm								
Model	Wall mounted				Central			
	11	13	15	17	22	26	30	34
H (mm)	530	530	530	530	530	530	530	530
A (mm)	200	200	405	610	200	200	405	610
A1 (mm)	330	450	450	450	330	450	450	450
B (mm)	315	315	315	315	315	315	315	315
D (mm)	1120	1240	1445	1650	2240	2480	2890	3300
Weight (kg/m)	52	57	60	65	104	114	120	130

FIXING POINTS



Length (mm)	OPAFLUX		C (mm)	C1 (mm)	L (mm)	L1 (mm)	L2 (mm)
	A (mm)	B (mm)					
1000	30	468	51	32.5	-	-	-
1500					699	-	715
2000					626	645	645
2500					793	811	811
3000					715	2x734	734

CONNECTIONS: Diameter and recommended number of hoops



Model	11 - 13 - 15 - 17			11	13 - 15 - 17	
Length (mm)	ØA	C	D	ØB	E	ØB
1000	315	500	-	315	217	315
1500	355	750	-	315		355
2000	400	1000	500	315		315
2500	450	1250	625	315		315
3000*	355	1500	750	315		355

ØA: recommended extraction diameter
 ØB: recommended compensation diameter
 - for depth 1120mm: ØB max 315
 - for depth 1240mm, 1445mm, 1650mm : ØB max 355
 *: Length 3070 mm single block
 Drilling and connection hoops as an option