



# LUDINE

Static Extractors / hoods  
H=380mm



VENTILATION OF PROFESSIONAL KITCHENS, A SPECIALIST AFFAIR.

# LUDINE STATIC

## DESIGN / MANUFACTURE

### The LUDINE range is single-block:

- from 1000 to 2500mm for wall mounted hoods (single block up to 3000mm possible as an option)
  - from 1000 to 3000mm for central hoods.
- Longer lengths are created by assembling single block units screwed together, with no visible fixings on the outer faces and in the extraction volume.

### LUDINE hoods are available in two models:

#### LUDINE T:

extractor height 380 / front face height = 230mm

#### LUDINE R:

extractor height 380 / front face height = 380mm

**There is a support profile built into each end of the single block unit,** making it possible to suspend it from ØM8 threaded rods.

**The production method used, with folds on all visible parts,** gives a finish that is free of burrs and protruding parts.

**All visible parts are manufactured from AISI 304 austenitic stainless steel** (CN 18-10), brushed finish on both sides, 220 grade with PVC protection.

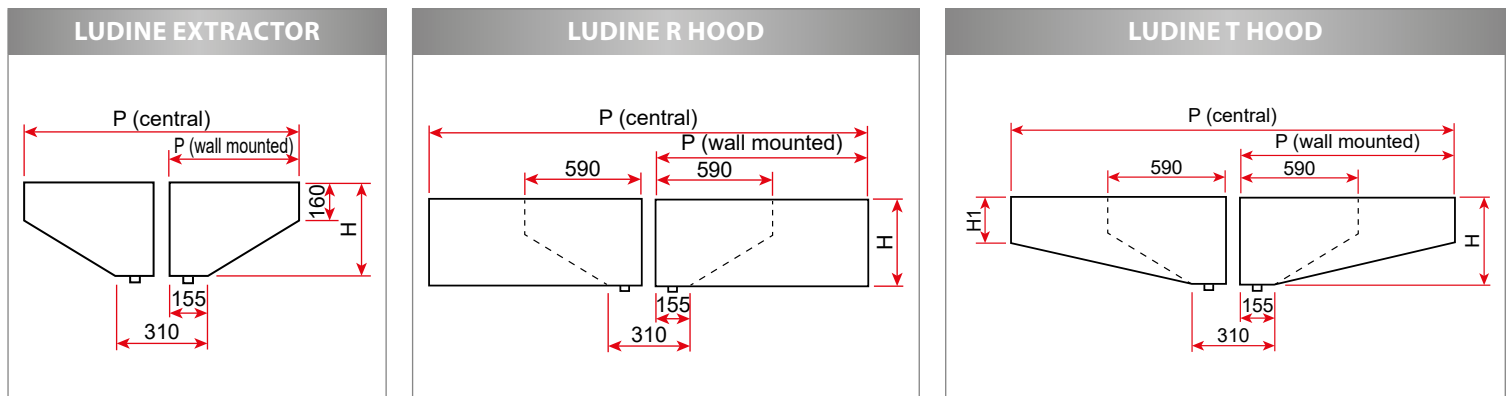
**The design of the ends avoids all markings on the outer faces.** They are assembled using heat-welded pins and nuts.

**Mesh filters** 398x498x25mm with stainless steel frame and handle, galvanised medium (flow of 1100m<sup>3</sup>/h per filter). **Optionally, full stainless steel filters** (flow of 1100m<sup>3</sup>/h per filter), **baffle filters** (flow of 600m<sup>3</sup>/h per filter) or **HE filter** (flow of 500m<sup>3</sup>/h). Stainless steel 398x498x25mm neutral plates.

**Each single block unit is leak tight** and fitted with a G3/8 stainless steel purge plug in its lower part to drain off grease and condensates.

The extractors and central hoods are composed of two back to back elements with a central separator, to be assembled together using the supplied hardware.

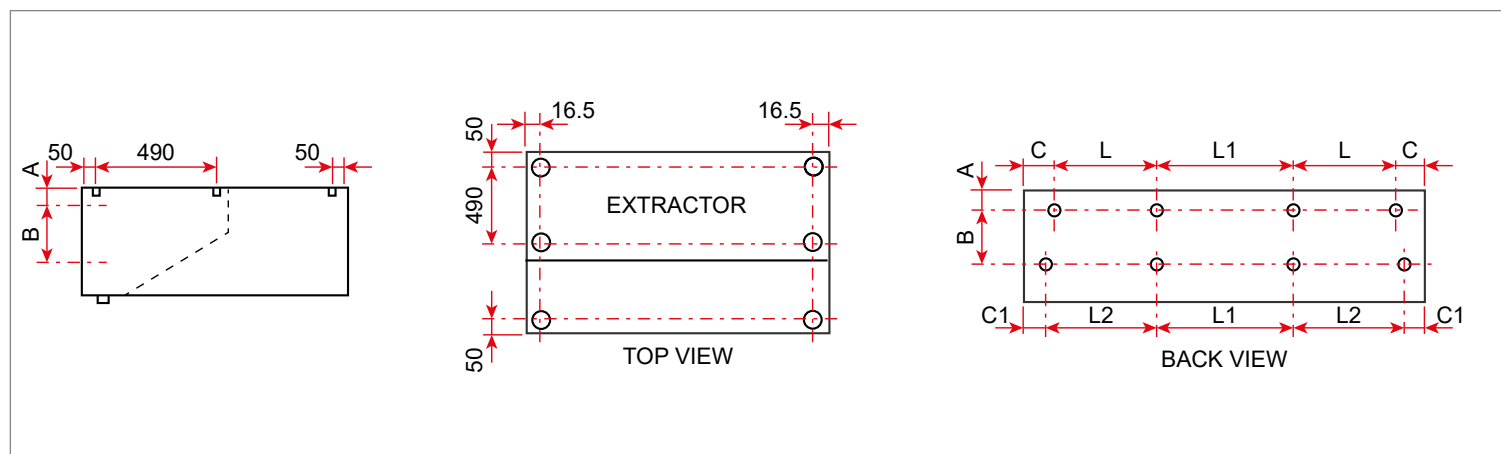
## DIMENSIONS / WEIGHT



LUDINE H=380 mm											
H (mm)	380	380	380	380	380	380	380	380	380	380	380
H1 (mm)	-	-	230	-	230	-	230	-	230	-	230
Wall mounted											
Model	06	09		11		13		15		17	
		R	T	R	T	R	T	R	T	R	T
D (mm)	590	915		1120		1240		1445		1650	
Weight (kg/m)	22	32	31	37	36	42	41	45	44	48	47
Central											
Model	12	18		22		26		30		34	
		R	T	R	T	R	T	R	T	R	T
D (mm)	1180	1830		2240		2480		2890		3300	
Weight (kg/m)	44	64	62	74	72	84	82	90	88	96	94

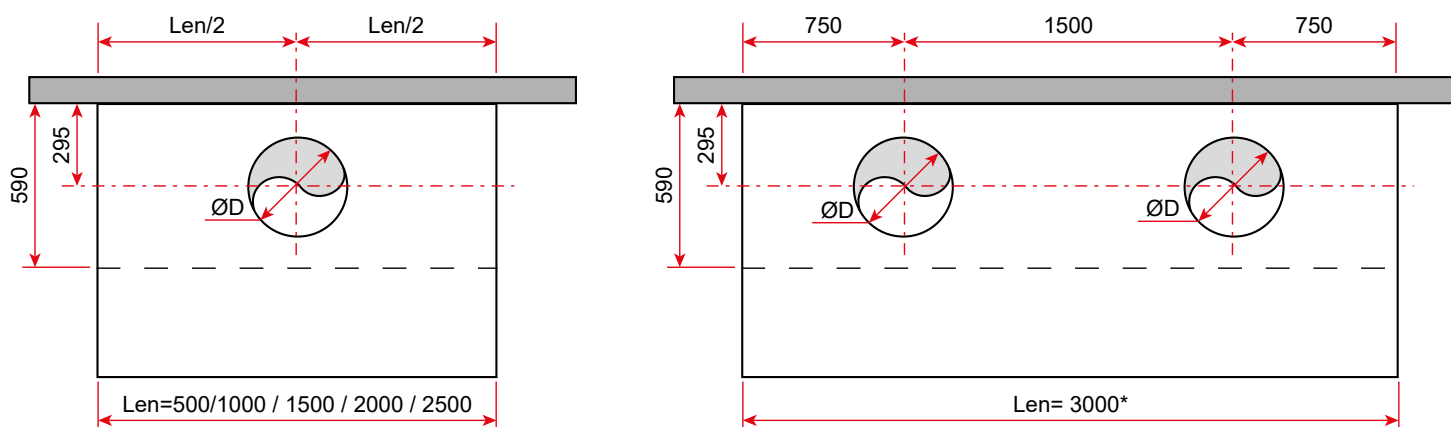
# LUDINE STATIC

## FIXING POINTS



Length (mm)	LUDINE		C (mm)	C1 (mm)	L (mm)	L1 (mm)	L2 (mm)
	A (mm)	B (mm)					
500	30	318	51	32.5	-	-	-
1000					-	-	-
1500					699	-	715
2000					626	645	645
2500					793	811	811
3000					715	2x734	734

## CONNECTIONS: Diameter and recommended number of hoops



Length (mm)	500	1000	1500	2000	2500	3000*
$\varnothing D$ (mm)	315	315	355	400	400	355

\*: Length 3000 mm single block  
Drilling and connection hoops as an option