



**LUDINE**

Dynamic Extractors / hoods  
H=380mm



VENTILATION OF PROFESSIONAL KITCHENS, A SPECIALIST AFFAIR.

# LUDINE DYNAMIC

## DESIGN / MANUFACTURE

| **The LUDINE range is single-block** from 1000 to 2500mm (3000mm single block available as an option). They have no visible fixings on the outer faces and in the extraction volume.

| **LUDINE hoods are available in two models:**

### LUDINE T:

extractor height 380 / front face height = 230mm

### LUDINE R:

extractor height 380 / front face height = 380mm

| **There is a support profile built into each end of the single block unit**, making it possible to suspend it from ØM8 threaded rods.

| **The production method used, with folds on all visible parts**, gives a finish that is free of burrs and protruding parts.

| **All visible parts are manufactured from AISI 304 austenitic stainless steel** (CN 18-10), brushed finish on both sides, 220 grade with PVC protection.

| **The design of the ends avoids all markings on the outer faces.** They are assembled using heat-welded pins and nuts.

| **Mesh filters** 398x498x25mm with stainless steel frame and handle, galvanised medium (flow of 1100m<sup>3</sup>/h per filter). **Optionally, full stainless steel filters** (flow of 1100m<sup>3</sup>/h per filter), **baffle filters** (flow of 600m<sup>3</sup>/h per filter) or **HE filter** (flow of 500m<sup>3</sup>/h). Stainless steel 398x498x25mm neutral plates.

| **Each single block unit is leak tight** and fitted with a G3/8 stainless steel purge plug in its lower part to drain off grease and condensates.

| Dynamic extractors and hoods are fitted with **direct drive motor-fans, compliant with the ErP 2015 directive.**

| **Easily removable**, the motor-fan is fixed using heat-welded pins and brackets.

### Fan position:

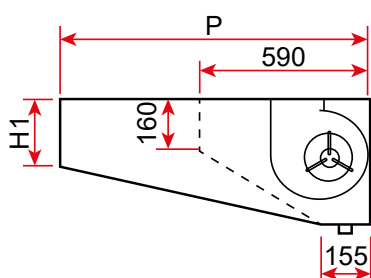
- Standard: Mounted in the upper central position,
- On request: Mounted in the rear central position,
- Optionally: upper or rear offset position.

| **Caution:** 3000mm long hoods are composed of a 2000+1000mm module to be assembled on site. Single block 3000mm lengths are available as an option.

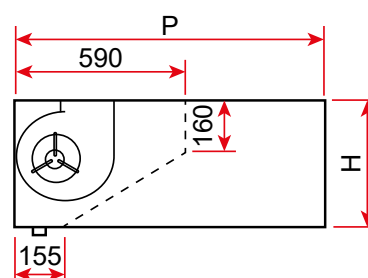
*Note: To obtain correct efficiency, we recommend not exceeding a length of 3000mm.*

## DIMENSIONS / WEIGHT

LUDINE T HOOD



LUDINE R HOOD



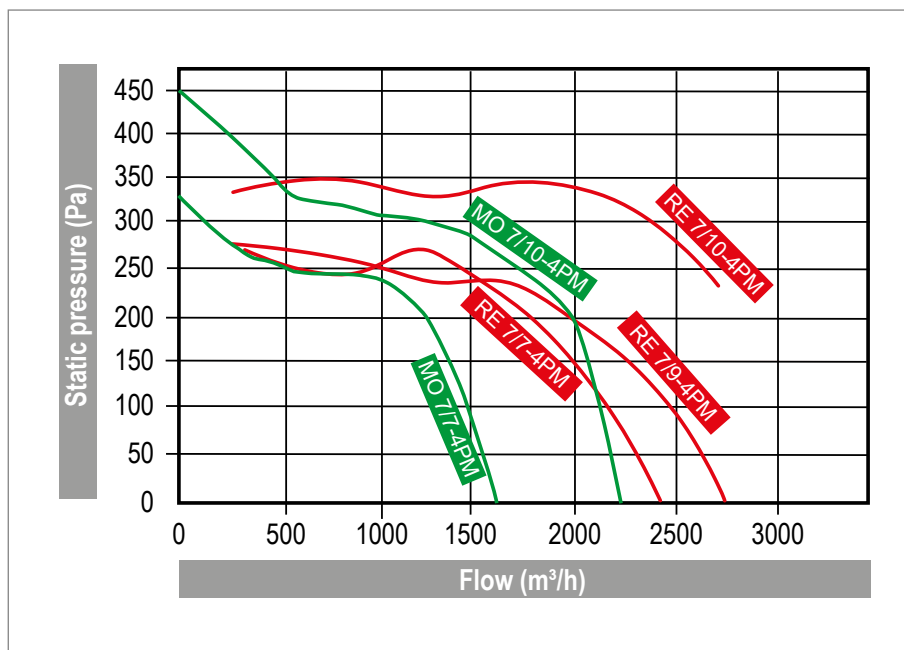
LUDINE H=380 mm

Model	06	09		11		13		15		17	
		R	T	R	T	R	T	R	T	R	T
H (mm)	380	380	380	380	380	380	380	380	380	380	380
H1 (mm)	-	-	230	-	230	-	230	-	230	-	230
D (mm)	590	915		1120		1240		1445		1650	
Weight* (kg/m)	22	32	31	37	36	42	41	45	44	48	47

\*: Weight excluding the fan



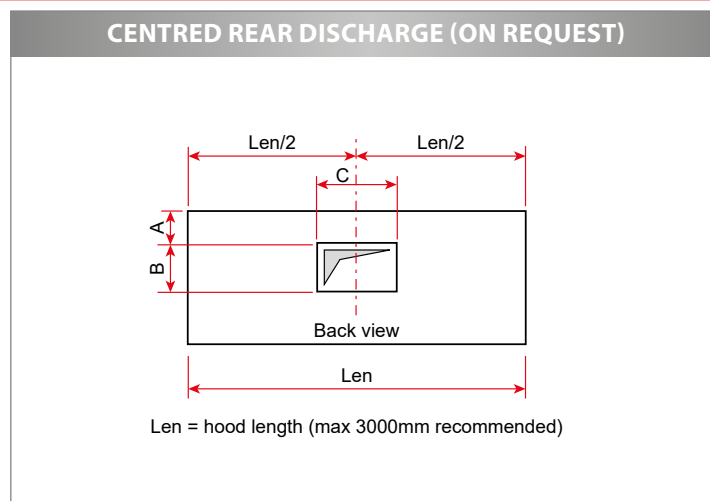
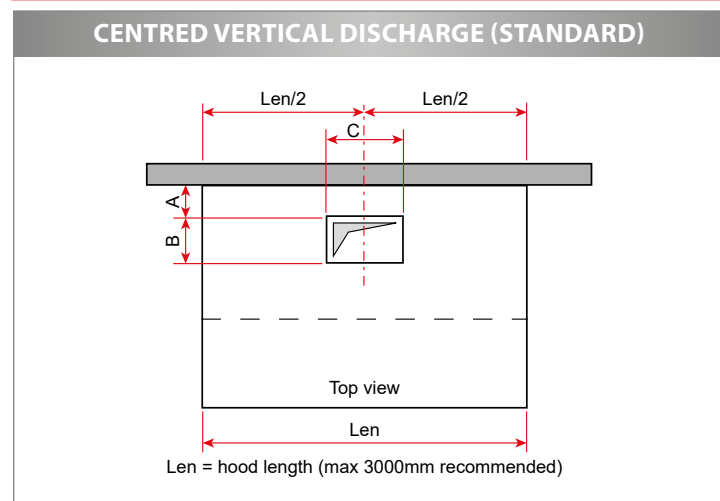
## SELECTION GRAPHS



## ELECTRIC SPECIFICATIONS

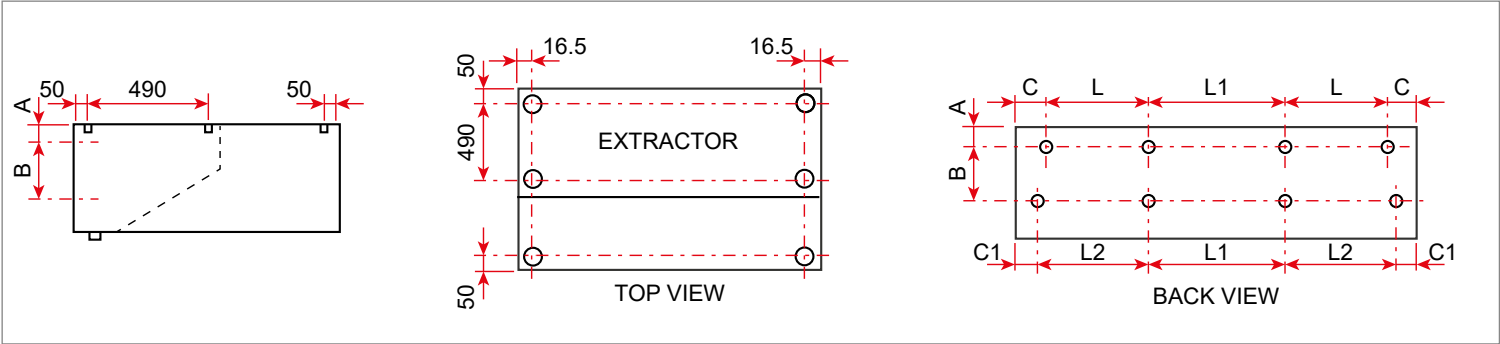
FANS	Voltage (V)	Speed (rpm)	Int. (A)	Power (W)	Freq. (Hz)	Class	IP	Cond. (mF)	Use Temperature (°C)	Variable drive	Weight (kg)
RE 7/7-4PM	Single phase 230	1260	2.4	300	50/60	F	55	8	-20/40	ALVIAIR 3L	10
RE 7/9-4PM	Single phase 230	1260	2.7	300	50/60	F	55	8	-20/40	ALVIAIR 3L	15
RE 7/10-4PM	Single phase 230	1320	3.15	420	50	F	55	12.5	-20/40	ALVIAIR 5L	15
MO 7/7-4PM	Single phase 230	1300	1.1	145	50	F	54	5	-20/45	ALVIAIR 3L	8
MO 7/10-4PM	Single phase 230	1300	2.3	300	50	F	54	6.3	-20/45	ALVIAIR 5L	18

## FAN DISCHARGE POSITION



Fan	A (mm)	B (mm)	C (mm)
RE 7/7	122	208	232
RE 7/9	122	208	298
RE 7/10	65	262	298
MO 7/7	122	216	230
MO 7/10	65	262	298

## FIXING POINTS



Length (mm)	LUDINE		C (mm)	C1 (mm)	L (mm)	L1 (mm)	L2 (mm)
	A (mm)	B (mm)					
500	30	318	51	32.5	-	-	-
1000					-	-	-
1500					699	-	715
2000					626	645	645
2500					793	811	811
3000					715	2x734	734

