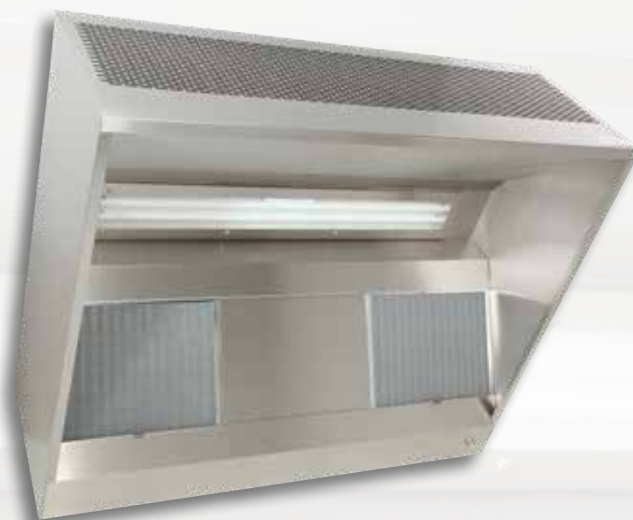




ISO 9001  
BUREAU VERITAS  
Certification



# **LUDIFLUX**

## Compensation hood H=380mm



VENTILATION OF PROFESSIONAL KITCHENS, A SPECIALIST AFFAIR.

# LUDIFLUX

## DESIGN / MANUFACTURE

### | The **LUDIFLUX** range is single-block:

- from 1000 to 2500mm for wall mounted hoods (single block up to 3000mm possible as an option)

- from 1000 to 3000mm for central hoods

Longer lengths are created by assembling single block units screwed together, with no visible fixings on the outer faces and in the extraction volume.

| LUDIFLUX hoods are available at a height of 380 mm.

| **There is a support profile built into each end of the single block unit**, making it possible to suspend it from ØM8 threaded rods.

| **The production method used, with folds on all visible parts**, gives a finish that is free of burrs and protruding parts.

| **All visible parts are manufactured from AISI 304 austenitic stainless steel** (CN 18-10), brushed finish on both sides, 220 grade with PVC protection.

| **The design of the ends avoids all markings on the outer faces.** They are assembled using heat-welded pins and nuts.

| **Mesh filters** 398x498x25mm with stainless steel frame and handle, galvanised medium (flow of 1100m<sup>3</sup>/h per filter). **Optionally, full stainless steel filters** (flow of 1100m<sup>3</sup>/h per filter), **baffle filters** (flow of 600m<sup>3</sup>/h per filter) or **HE filters** (flow of 500m<sup>3</sup>/h). Stainless steel 398x498x25mm neutral plates.

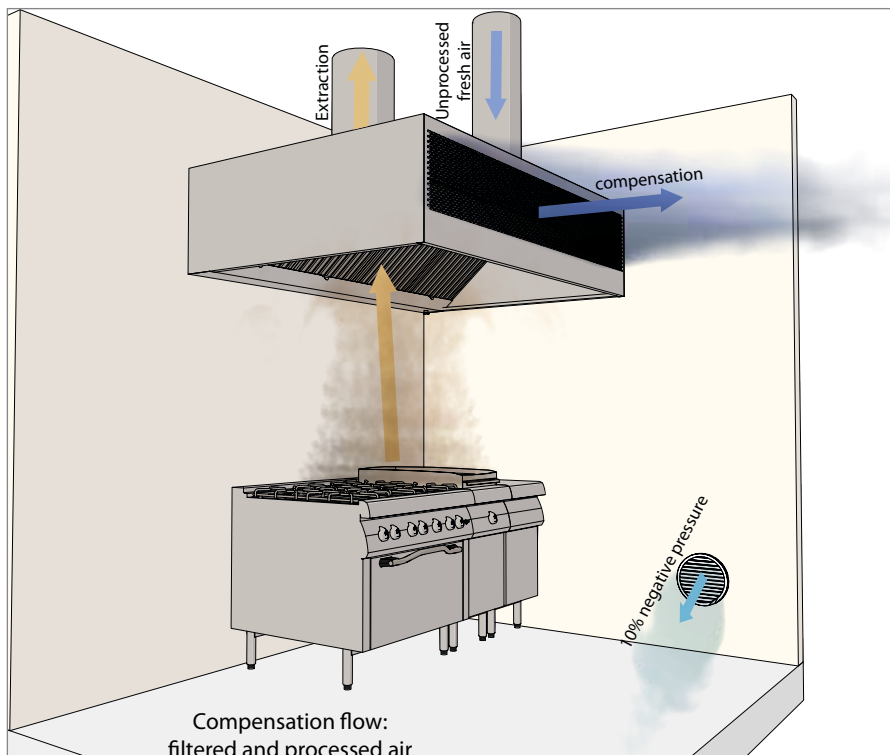
| Each single block unit is fitted with a G3/8 stainless steel purge plug in its lower part to drain off grease and condensates.

| **The compensation plenum is insulated** with M1 foam. The front face has a flow diffuser system.

| Access to this plenum is made easy by **removable panels** making module assembly easier.

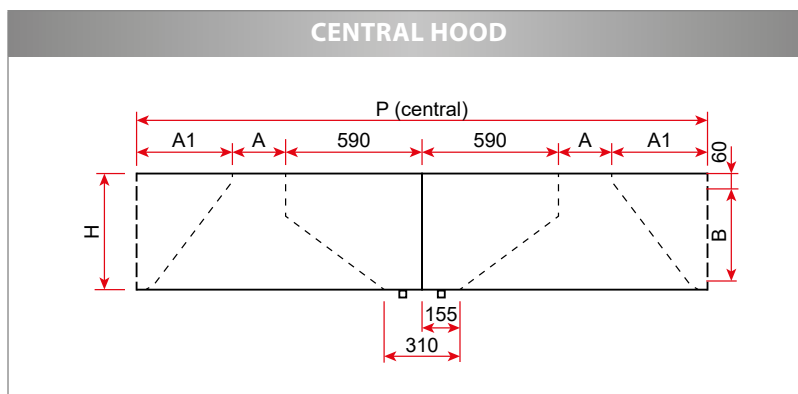
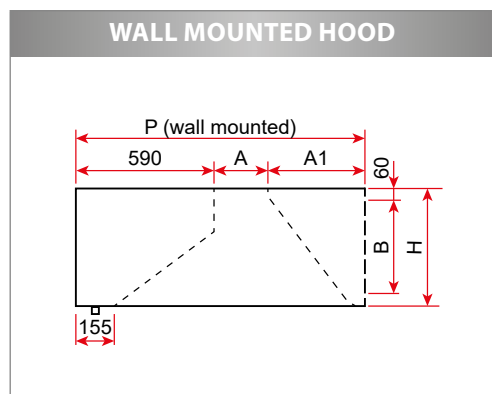
| The central hoods are composed of two back to back elements with a central separator, to be assembled together using the supplied hardware.

## PRINCIPLE DIAGRAM



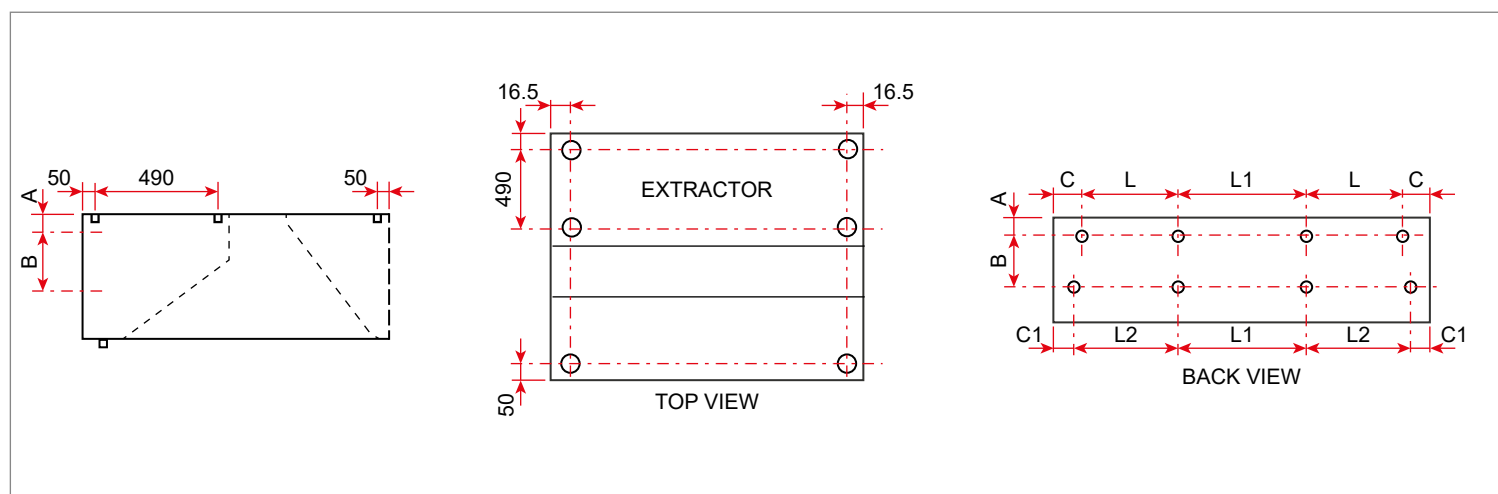
# LUDIFLUX

## DIMENSIONS / WEIGHT



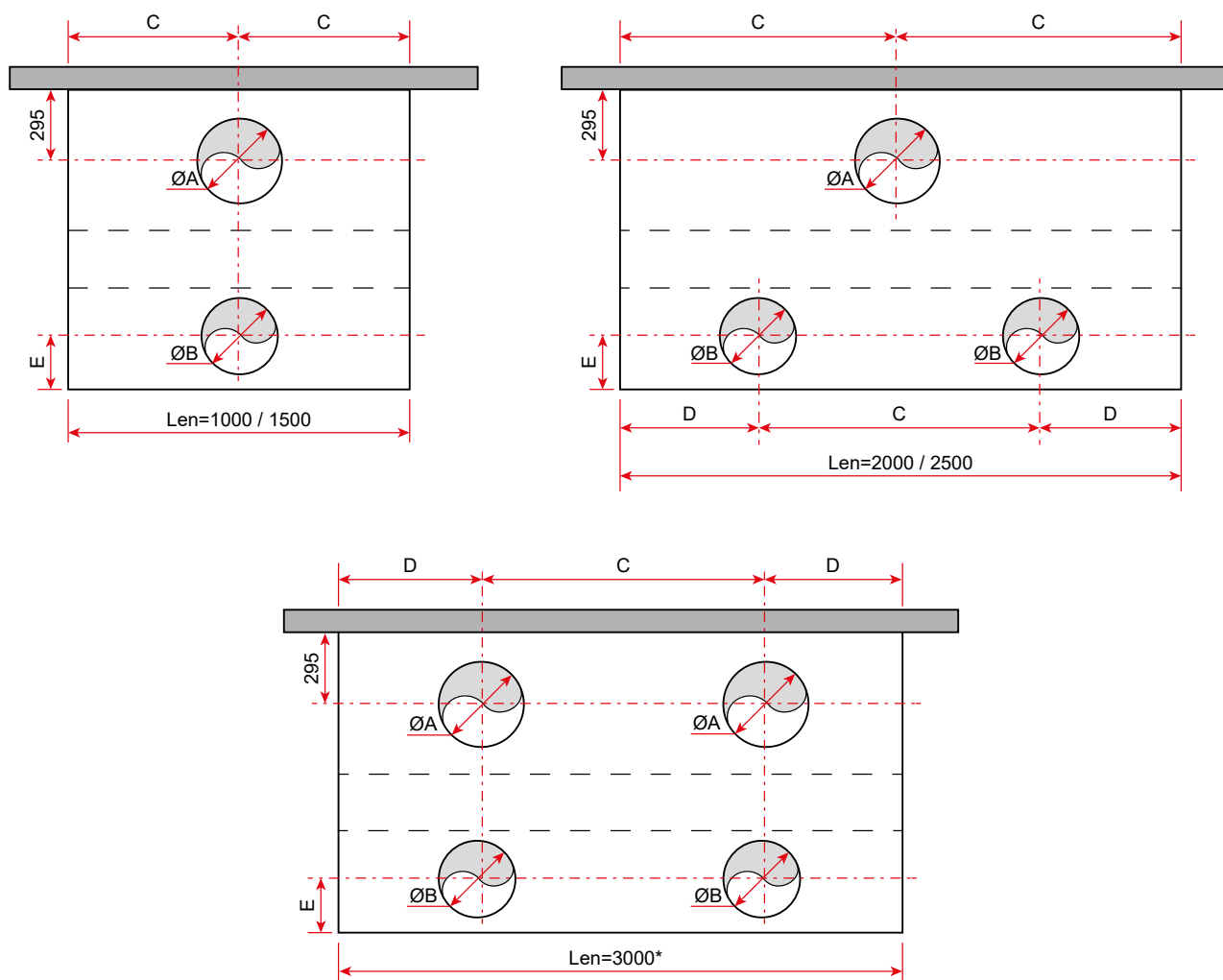
| LUDIFLUX H=380 mm |              |      |      |      |         |      |      |      |
|-------------------|--------------|------|------|------|---------|------|------|------|
| Model             | Wall mounted |      |      |      | Central |      |      |      |
|                   | 11           | 13   | 15   | 17   | 22      | 26   | 30   | 34   |
| H (mm)            | 380          | 380  | 380  | 380  | 380     | 380  | 380  | 380  |
| A (mm)            | 200          | 200  | 405  | 610  | 200     | 200  | 405  | 610  |
| A1 (mm)           | 330          | 450  | 450  | 450  | 330     | 450  | 450  | 450  |
| B (mm)            | 172          | 172  | 172  | 172  | 172     | 172  | 172  | 172  |
| D (mm)            | 1120         | 1240 | 1445 | 1650 | 2240    | 2480 | 2890 | 3300 |
| Weight (kg/m)     | 42           | 46   | 49   | 52   | 84      | 92   | 98   | 104  |

## FIXING POINTS



| Length (mm) | LUDIFLUX |        | C (mm) | C1 (mm) | L (mm) | L1 (mm) | L2 (mm) |
|-------------|----------|--------|--------|---------|--------|---------|---------|
|             | A (mm)   | B (mm) |        |         |        |         |         |
| 1000        | 30       | 318    | 51     | 32.5    | -      | -       | -       |
| 1500        |          |        |        |         | 699    | -       | 715     |
| 2000        |          |        |        |         | 626    | 645     | 645     |
| 2500        |          |        |        |         | 793    | 811     | 811     |
| 3000        |          |        |        |         | 715    | 2x734   | 734     |

## CONNECTIONS: Diameter and recommended number of hoops



| Model       | 11 - 13 - 15 - 17 |      |     | 11  |     | 13 - 15 - 17 |     |
|-------------|-------------------|------|-----|-----|-----|--------------|-----|
| Length (mm) | ØA                | C    | D   | ØB  | E   | ØB           | E   |
| 1000        | 315               | 500  | -   | 315 | 217 | 315          | 262 |
| 1500        | 355               | 750  | -   | 315 |     | 355          |     |
| 2000        | 400               | 1000 | 500 | 315 |     | 315          |     |
| 2500        | 450               | 1250 | 625 | 315 |     | 315          |     |
| 3000*       | 355               | 1500 | 750 | 315 |     | 355          |     |

ØA: recommended extraction diameter  
 ØB: recommended compensation diameter  
 - for depth 1120mm: ØB max 315  
 - for depth 1240mm, 1445mm, 1650mm : ØB max 355  
 \*: Length 3070 mm single block  
 Drilling and connection hoops as an option