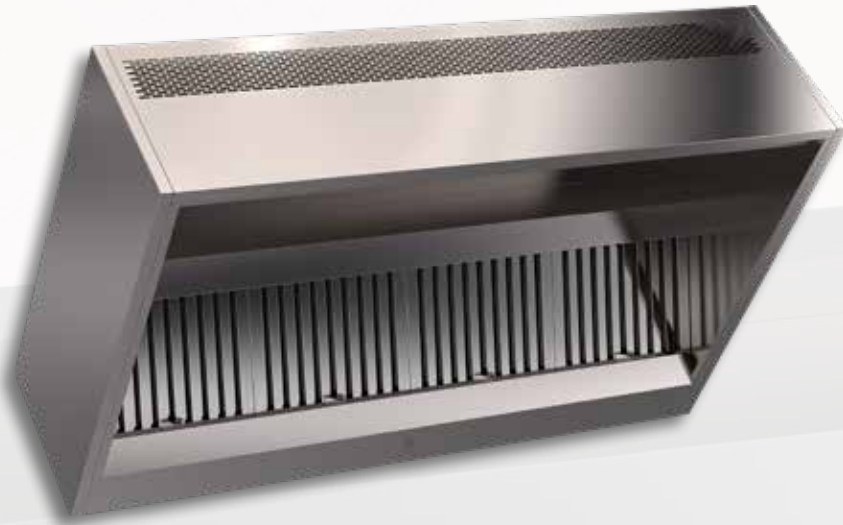




ISO 9001
BUREAU VERITAS
Certification



HEXOTECH ITFi

Welded, negative pressure flow hood
with peripheral air blade,
built-in fan
and front compensation

COMPLIANT WITH THE
NF EN 16282-2 STANDARD



VENTILATION OF PROFESSIONAL KITCHENS, A SPECIALIST AFFAIR.

HEXOTECH ITFi WITH PERIPHERAL AIR BLADE

DESIGN / MANUFACTURE

HEXOTECH hoods are manufactured in compliance with the NF EN 16282-2 standard.

Negative pressure HEXOTECH hoods are single block from 1070 to 3070mm. Longer lengths are created by assembling single block units screwed together, with no visible fixings on the outer faces and in the extraction volume.

HEXOTECH ITFi hoods are available at a height of 530 mm.

The join between the side gutter and the lower extractor band communicates and is welded.

The extractor lower corners are welded, providing perfect leak tightness.

There is a support profile built into each end of the single block unit, making it possible to suspend it from ØM8 threaded rods.

All parts are manufactured from AISI 304 austenitic stainless steel (CN 18-10), brushed finish 220 grade on both sides with PVC protection.

The front face is made using 12/10ths thickness.

The side casing (ends) are composed of a 35mm tray panel and a double skin. The panel corners are welded.

Baffle filters 398x498x25mm with stainless steel frame and handle (flow of 600m³/h). Optional **HE filter** (flow of 500m³/h).

Each single block unit is fitted with a **G3/4 stainless steel purge plug** in its lower part to drain off grease and condensates.

The insulated air blower plenum in M1 foam, is fitted with a negative pressure air flow regulation device in its lower part. Access to this plenum is made easy by **removable panels** making module assembly easier.

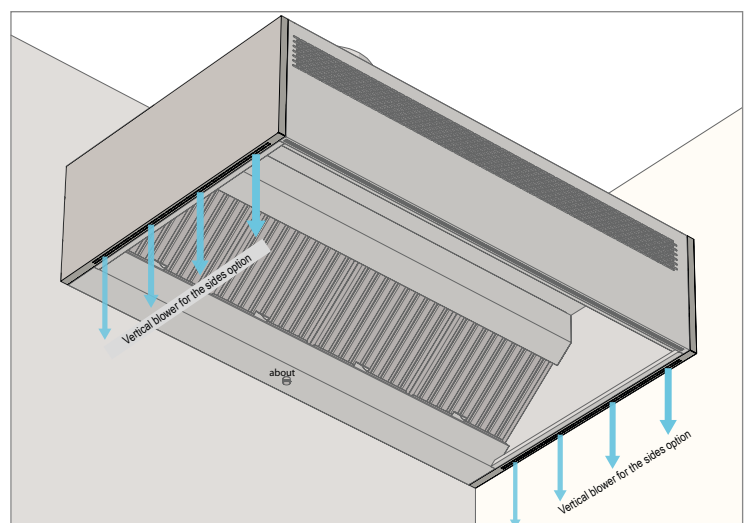
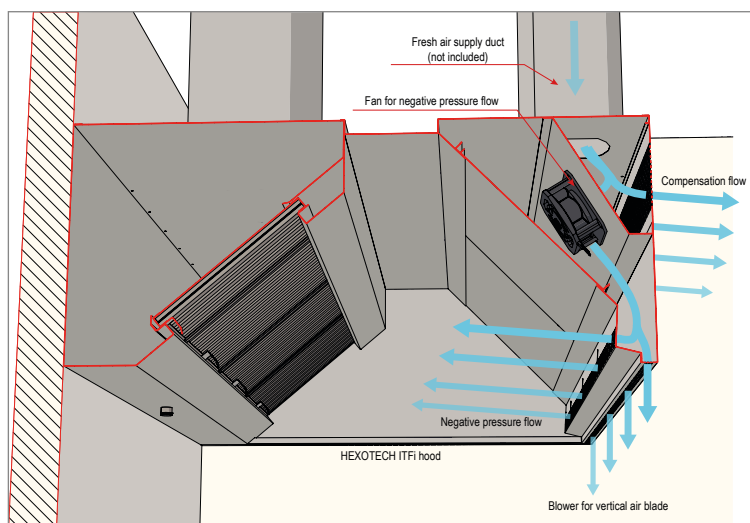
The front face has a flow diffuser system.

The central hoods are composed of two back to back elements with a central separator, to be assembled together using the supplied hardware.

The "ITFi" version avoids the installation of an aerologic network for the negative pressure flow. Motor-fans built into the blower plenum are used to bring the air for the negative pressure flow and the front vertical blower.

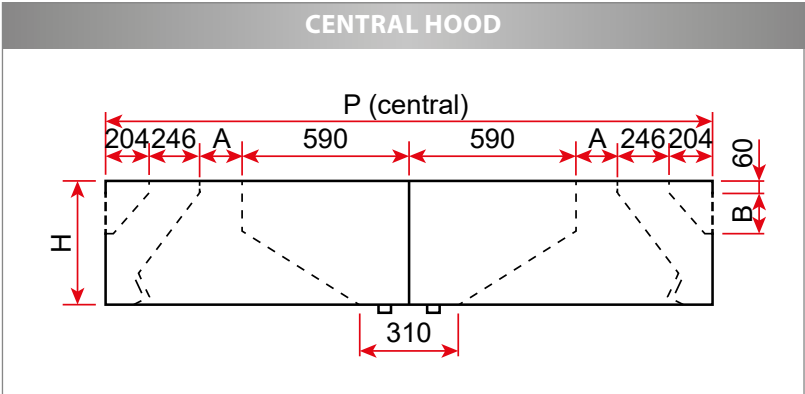
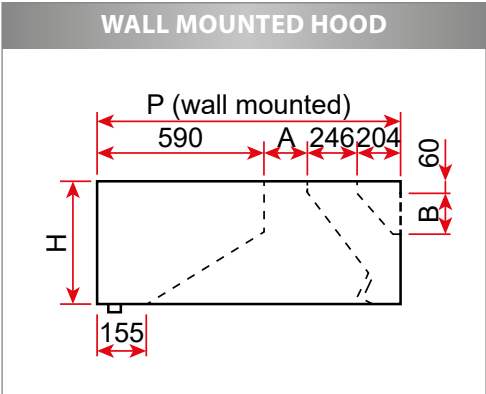
In order to complete the vertical air blade on the front of the hood **the sides are fitted with an identical motorised air diffusion system.**

PRINCIPLE DIAGRAM



HEXOTECH ITFi WITH PERIPHERAL AIR BLADE

DIMENSIONS / WEIGHT



HEXOTECH ITFi 53						
Model	wall mounted			central		
	13	15	17	26	30	34
ITF						
H (mm)	530					
A (mm)	200	405	610	200	405	610
B (mm)	139					
D (mm)	1240	1445	1650	2480	2890	3300
Weight (kg/m)	92	99	112	180	194	220

FIXING POINTS

