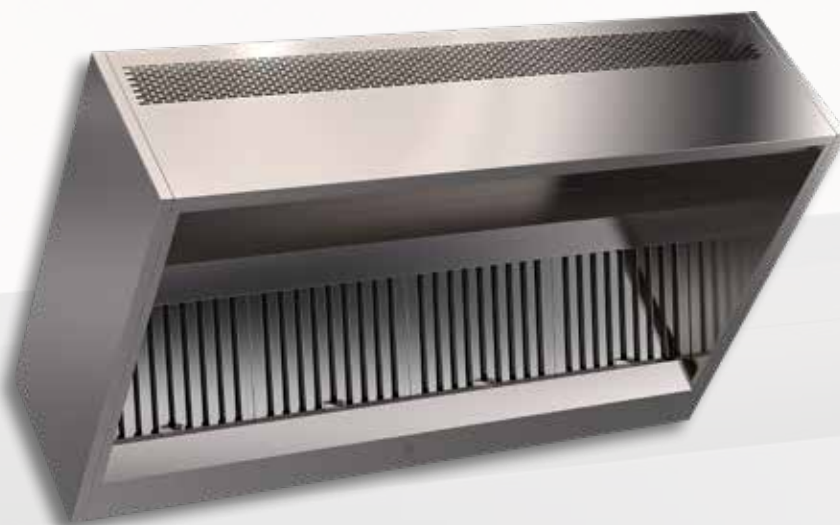




ISO 9001
BUREAU VERITAS
Certification



HEXOTECH ITF

Welded, negative pressure flow hood
H=400mm and 530mm

COMPLIANT WITH THE
NF EN 16282-2 STANDARD



VENTILATION OF PROFESSIONAL KITCHENS, A SPECIALIST AFFAIR.

HEXOTECH ITF

DESIGN / MANUFACTURE

HEXOTECH hoods are manufactured in compliance with the **NF EN 16282-2** standard.

| **Negative pressure HEXOTECH hoods are single block from 1070 to 3070mm.** Longer lengths are created by assembling single block units screwed together, with no visible fixings on the outer faces and in the extraction volume.

| **HEXOTECH ITF hoods are available at a height of 530 mm.**

| **The join between the side gutter and the lower extractor band communicates and is welded.**

| **The extractor lower corners are welded,** providing perfect leak tightness.

| **There is a support profile built into each end of the single block unit,** making it possible to suspend it from ØM8 threaded rods.

| **All parts are manufactured from AISI 304 austenitic stainless steel (CN 18-10),** brushed finish 220 grade on both sides with PVC protection.

| **The front face is made using 12/10ths thickness.**

| **The side casing (ends)** are composed of a 35mm tray panel and a double skin. The panel corners are welded.

| **Baffle filters** 398x498x25mm with stainless steel frame and handle (flow of 600m³/h). **Optional HE filter** (flow of 500m³/h).

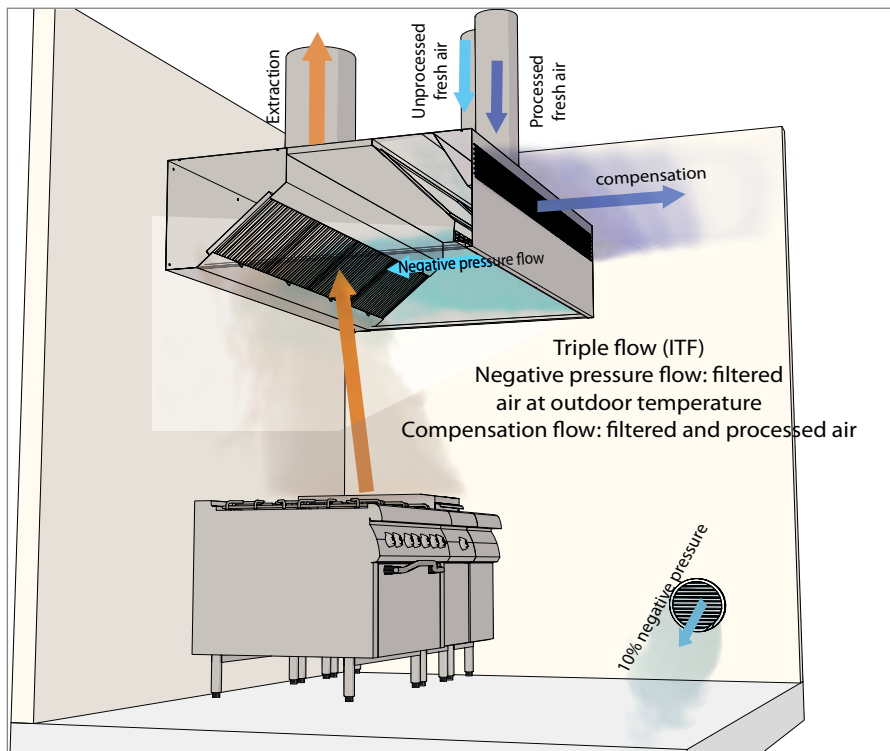
| Each single block unit is fitted with a **G3/4 stainless steel purge plug** in its lower part to drain off grease and condensates.

| **The insulated air blower plenum** in M1 foam, is fitted with a negative pressure air flow regulation device in its lower part. Access to this plenum is made easy by **removable panels** making module assembly easier.

| The front face has a flow diffuser system.

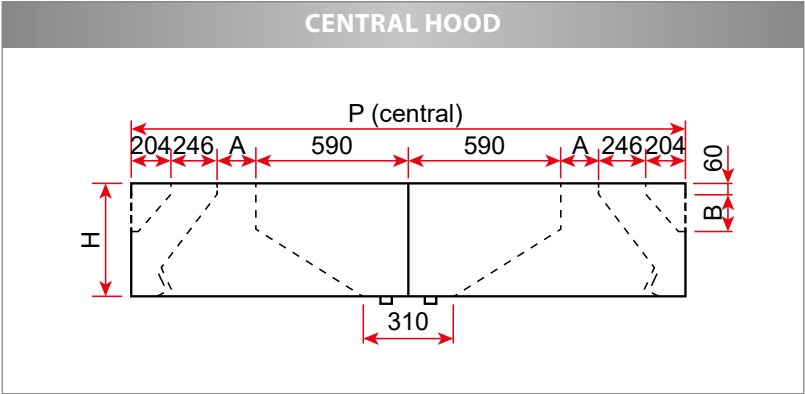
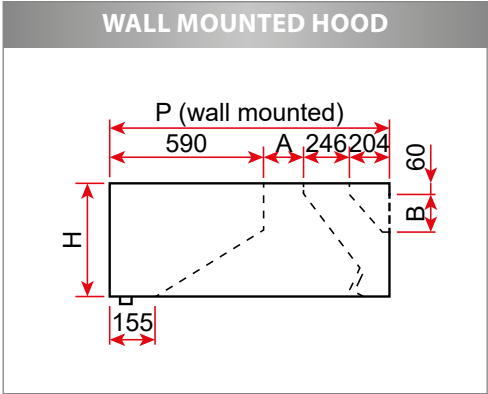
| The central hoods are composed of two back to back elements with a central separator, to be assembled together using the supplied hardware.

PRINCIPLE DIAGRAM



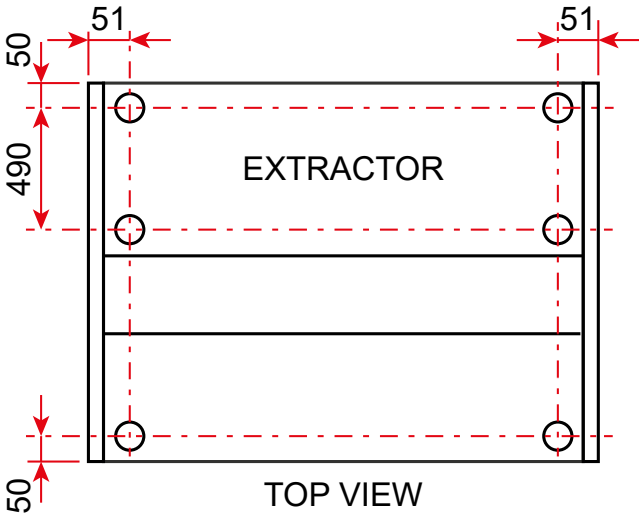
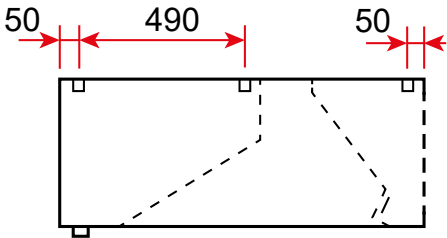
HEXOTECH ITF

DIMENSIONS / WEIGHT



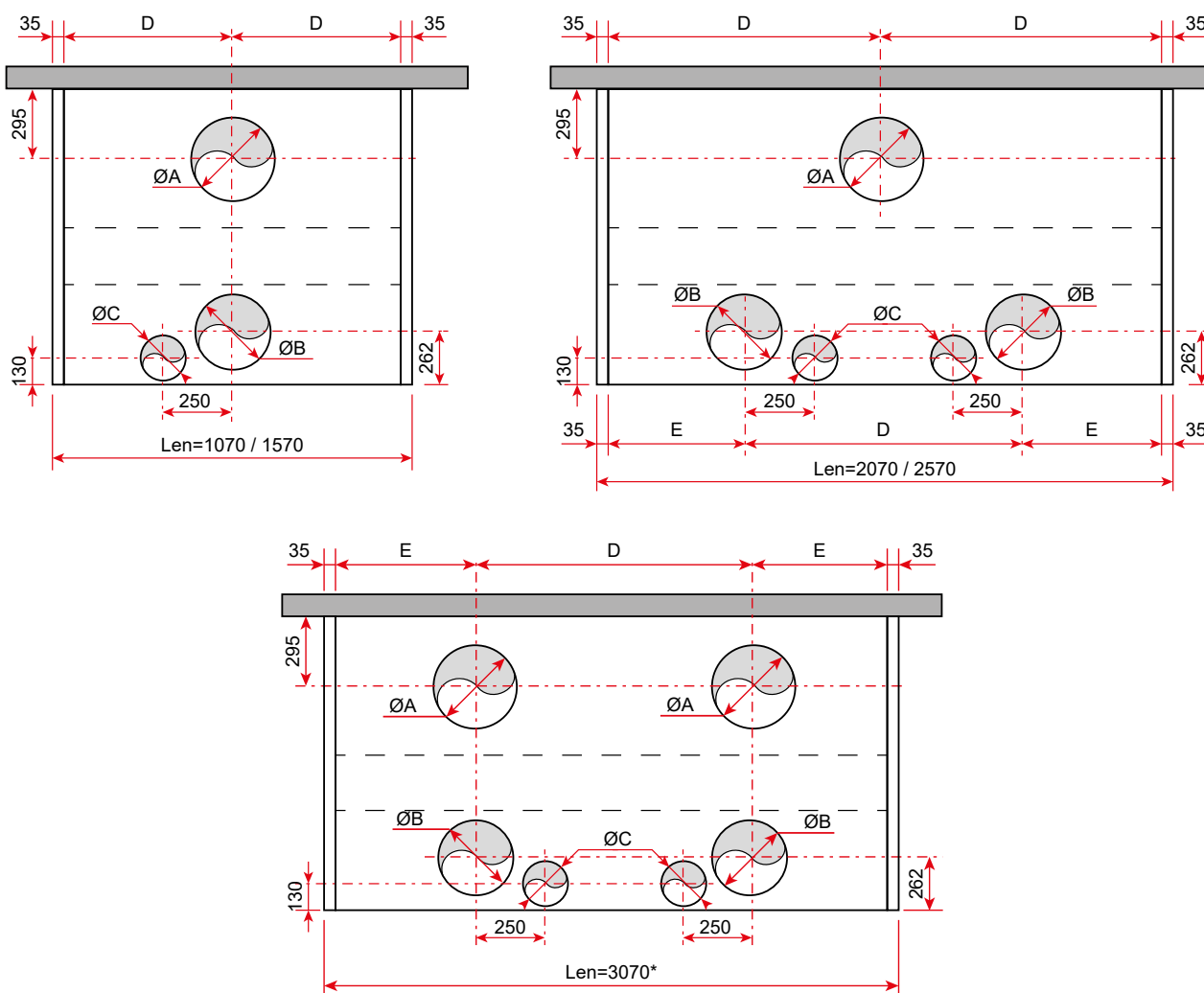
HEXOTECH ITF 53						
Model	wall mounted			central		
	13	15	17	26	30	34
H (mm)	530	530	530	530	530	530
A (mm)	200	405	610	200	405	610
B (mm)	139	139	139	139	139	139
D (mm)	1240	1445	1650	2480	2890	3300
Weight (kg/m)	88	95	108	176	190	216

FIXING POINTS



HEXOTECH ITF

CONNECTIONS: Diameter and recommended number of hoops



Length (mm)	ØA	ØB	ØC	D	E
1070	315	315	200	500	-
1570	355	355	200	750	-
2070	400	315	200	1000	500
2570	400	315	200	1250	625
3070*	355	355	200	1500	750

ØA: recommended extraction diameter
 ØB: recommended negative pressure/compensation flow diameter (ØB max 355)
 ØC: max compensation diameter
 *: Length 3070 mm single block
 Drilling and connection hoops as an option