



ISO 9001
BUREAU VERITAS
Certification



INDULINE ITF

Negative pressure flow hood
H=530mm



VENTILATION OF PROFESSIONAL KITCHENS, A SPECIALIST AFFAIR.

INDULINE ITF

DESIGN / MANUFACTURE

| The **INDULINE** range is single-block:

- from 1000 to 2500mm for wall mounted hoods (single block up to 3000mm possible as an option).
- from 1000 to 3000mm for central hoods.

Longer lengths are created by assembling single block units screwed together, with no visible fixings on the outer faces and in the extraction volume.

| INDULINE ITF hoods are available at a height of 530 mm.

| **There is a support profile built into each end of the single block unit**, making it possible to suspend it from ØM8 threaded rods.

| **The production method used, with folds on all visible parts**, gives a finish that is free of burrs and protruding parts.

| **All visible parts are manufactured from AISI 304 austenitic stainless steel** (CN 18-10), brushed finish on both sides, 220 grade with PVC protection.

| **The design of the ends avoids all markings on the outer faces.** They are assembled using heat-welded pins and nuts.

| **Mesh filters** 398x498x25mm with stainless steel frame and handle, galvanised medium (flow of 1100m³/h per filter). **Optionally, full stainless steel filters** (flow of 1100m³/h per filter), **baffle filters** (flow of 600m³/h per filter) or **HE filters** (flow of 500m³/h).

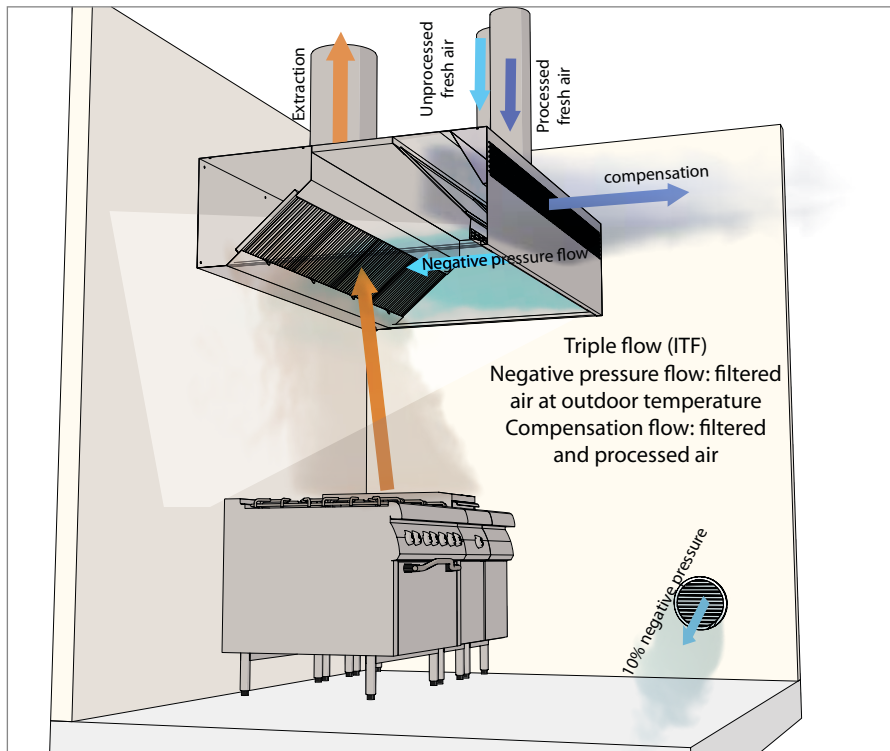
| Each single block unit is fitted with a G3/8 stainless steel purge plug in its lower part to drain off grease and condensates.

| **The insulated negative pressure flow plenum in M1 foam**, is fitted with an air flow regulation device in its lower part. Access to this plenum is made easy by **removable panels** making module assembly easier.

| The negative pressure flow adjustment can be accessed without any dismantling.

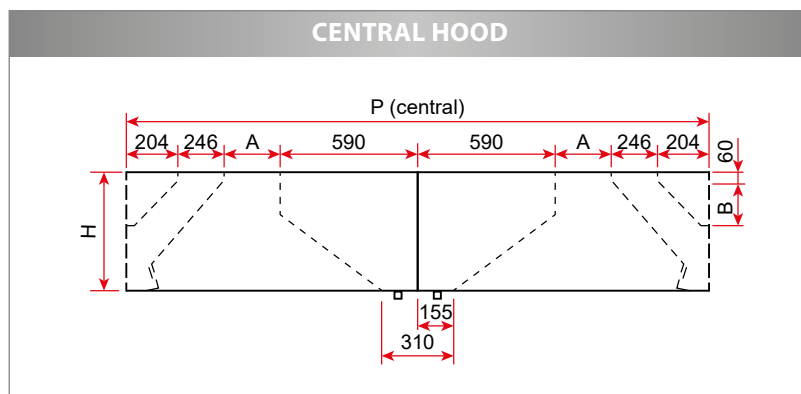
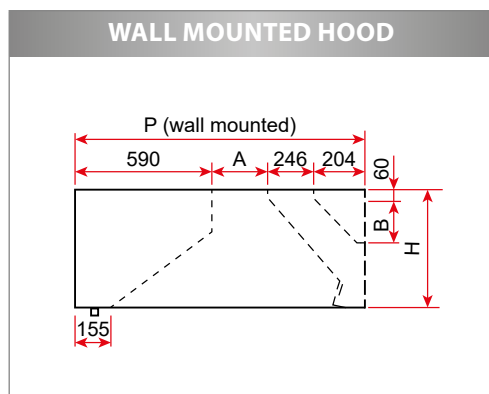
| The central hoods are composed of two back to back elements with a central separator, to be assembled together using the supplied hardware.

PRINCIPLE DIAGRAM



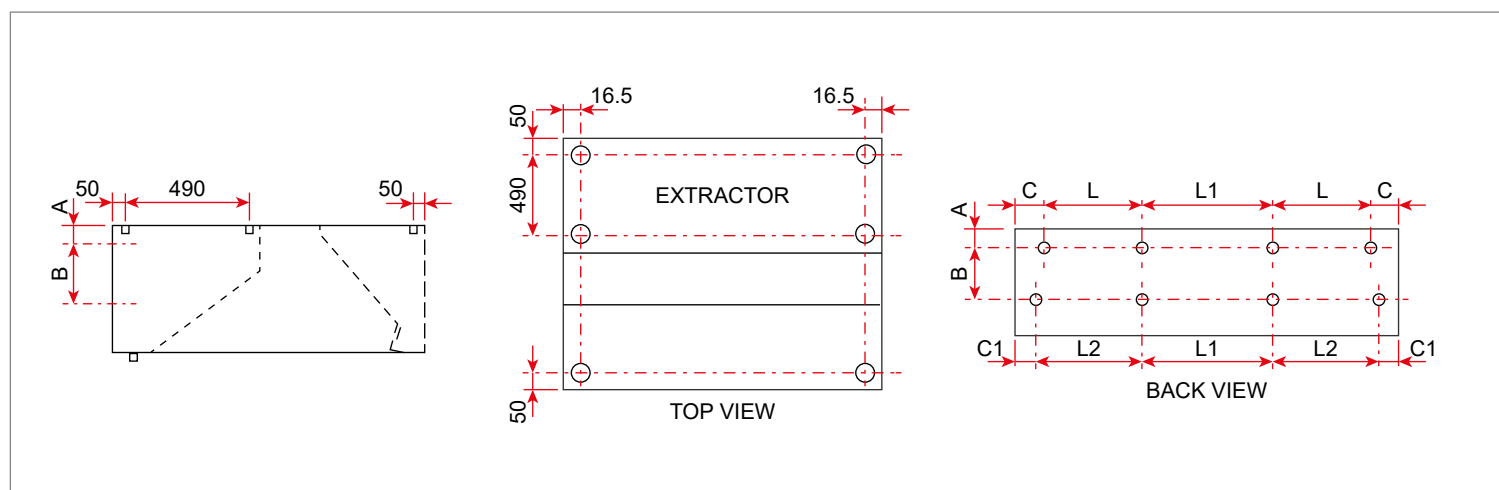
INDULINE ITF

DIMENSIONS / WEIGHT



INDULINE ITF H=530 mm						
Model	wall mounted			central		
	13	15	17	26	30	34
H (mm)	530	530	530	530	530	530
A (mm)	200	405	610	200	405	610
B (mm)	139	139	139	139	139	139
D (mm)	1240	1445	1650	2480	2890	3300
Weight (kg/m)	62	68	74	124	136	148

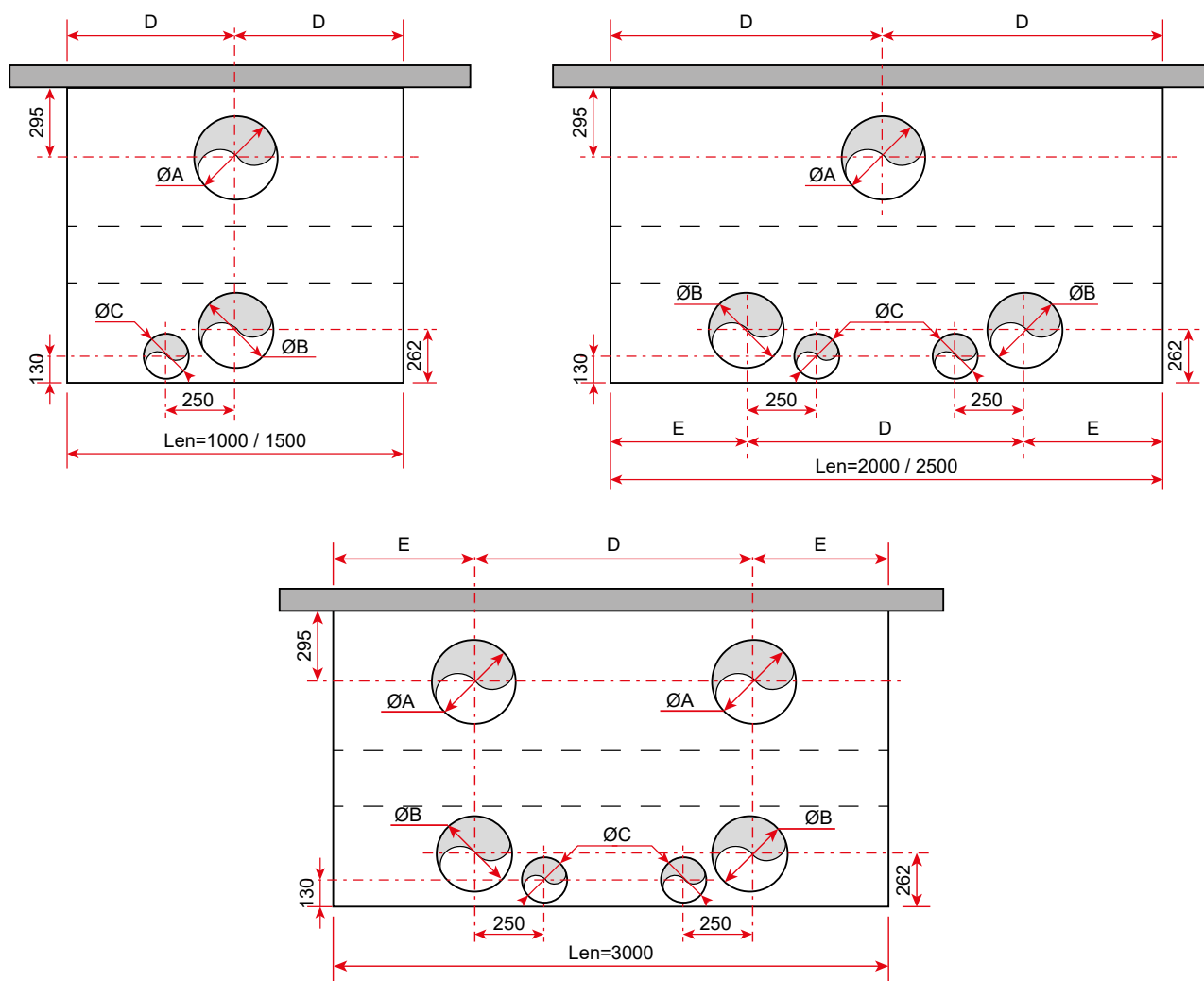
FIXING POINTS



Length (mm)	INDULINE		C (mm)	C1 (mm)	L (mm)	L1 (mm)	L2 (mm)
	A (mm)	B (mm)					
1000	30	468	51	32.5	-	-	-
1500					699	-	715
2000					626	645	645
2500					793	811	811
3000					715	2x734	734

INDULINE ITF

CONNECTIONS: Diameter and recommended number of hoops



Length (mm)	ØA	ØB	ØC	D	E
1000	315	315	200	500	-
1500	355	355	200	750	-
2000	400	315	200	1000	500
2500	400	315	200	1250	625
3000*	355	355	200	1500	750

ØA: recommended extraction diameter

ØB: recommended negative pressure/compensation flow diameter (ØB max 355)

ØC: max compensation diameter

*: Length 3000 mm single block

Drilling and connection hoops as an option