

HEXOTECH IDF

Welded, negative pressure flow hood
H=400mm and 530mm

COMPLIANT WITH THE
NF EN 16282-2 STANDARD



VENTILATION OF PROFESSIONAL KITCHENS, A SPECIALIST AFFAIR.

HEXOTECH IDF

DESIGN / MANUFACTURE

HEXOTECH hoods are manufactured in compliance with the **NF EN 16282-2** standard.

Negative pressure HEXOTECH hoods are single block from 1070 to 3070mm. Longer lengths are created by assembling single block units screwed together, with no visible fixings on the outer faces and in the extraction volume.

HEXOTECH IDF hoods are available in 2 heights:

HEXOTECH IDF 40: height 400 mm

HEXOTECH IDF 53: height 530 mm

The join between the side gutter and the lower extractor band communicates and is welded.

The extractor lower corners are welded, providing perfect leak tightness.

There is a support profile built into each end of the single block unit, making it possible to suspend it from ØM8 threaded rods.

All parts are manufactured from AISI 304 austenitic stainless steel (CN 18-10), brushed finish 220 grade on both sides with PVC protection.

The front face is made using 12/10ths thickness.

The side casing (ends) are composed of a 35mm tray panel and a double skin. The panel corners are welded.

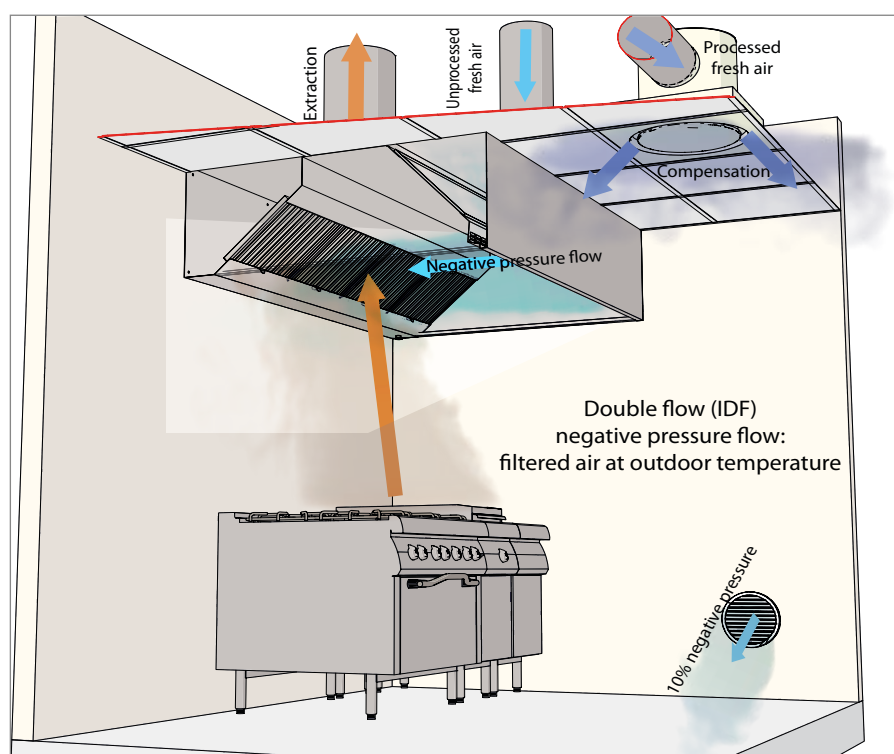
Baffle filters 398x498x25mm with stainless steel frame and handle (flow of 600m³/h). **Optional HE filter** (flow of 500m³/h).

Each single block unit is fitted with a **G3/4 stainless steel purge plug** in its lower part to drain off grease and condensates.

The insulated air blower plenum in M1 foam, is fitted with a negative pressure air flow regulation device in its lower part. Access to this plenum is made easy by **removable panels** making module assembly easier.

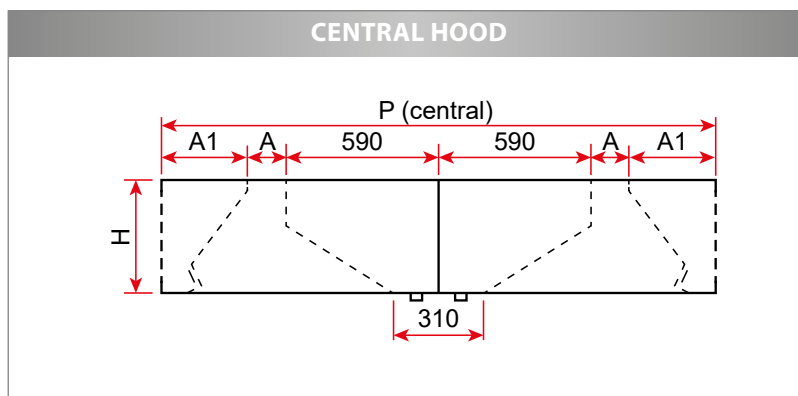
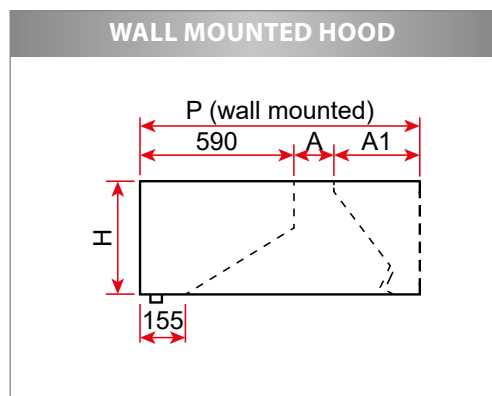
The central hoods are composed of two back to back elements with a central separator, to be assembled together using the supplied hardware.

PRINCIPLE DIAGRAM



HEXOTECH IDF

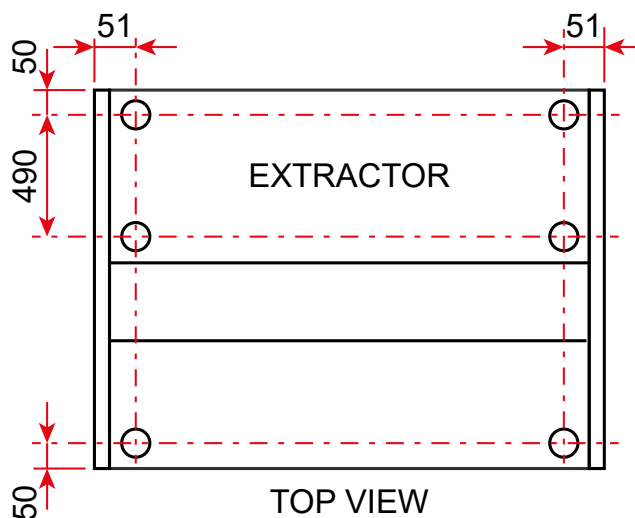
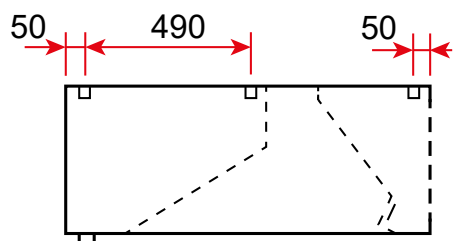
DIMENSIONS / WEIGHT



HEXOTECH IDF 40								
Model	wall mounted				central			
	11	13	15	17	22	26	30	34
H (mm)	400	400	400	400	400	400	400	400
A (mm)	200	200	405	610	200	200	405	610
A1 (mm)	330	450	450	450	330	450	450	450
D (mm)	1120	1240	1445	1650	2240	2480	2890	3300
Weight (kg/m)	61	67	76	83	122	134	152	166

HEXOTECH IDF 53								
Model	wall mounted				central			
	11	13	15	17	22	26	30	34
H (mm)	530	530	530	530	530	530	530	530
A (mm)	200	200	405	610	200	200	405	610
A1 (mm)	330	450	450	450	330	450	450	450
D (mm)	1120	1240	1445	1650	2240	2480	2890	3300
Weight (kg/m)	73	80	86	99	146	160	172	198

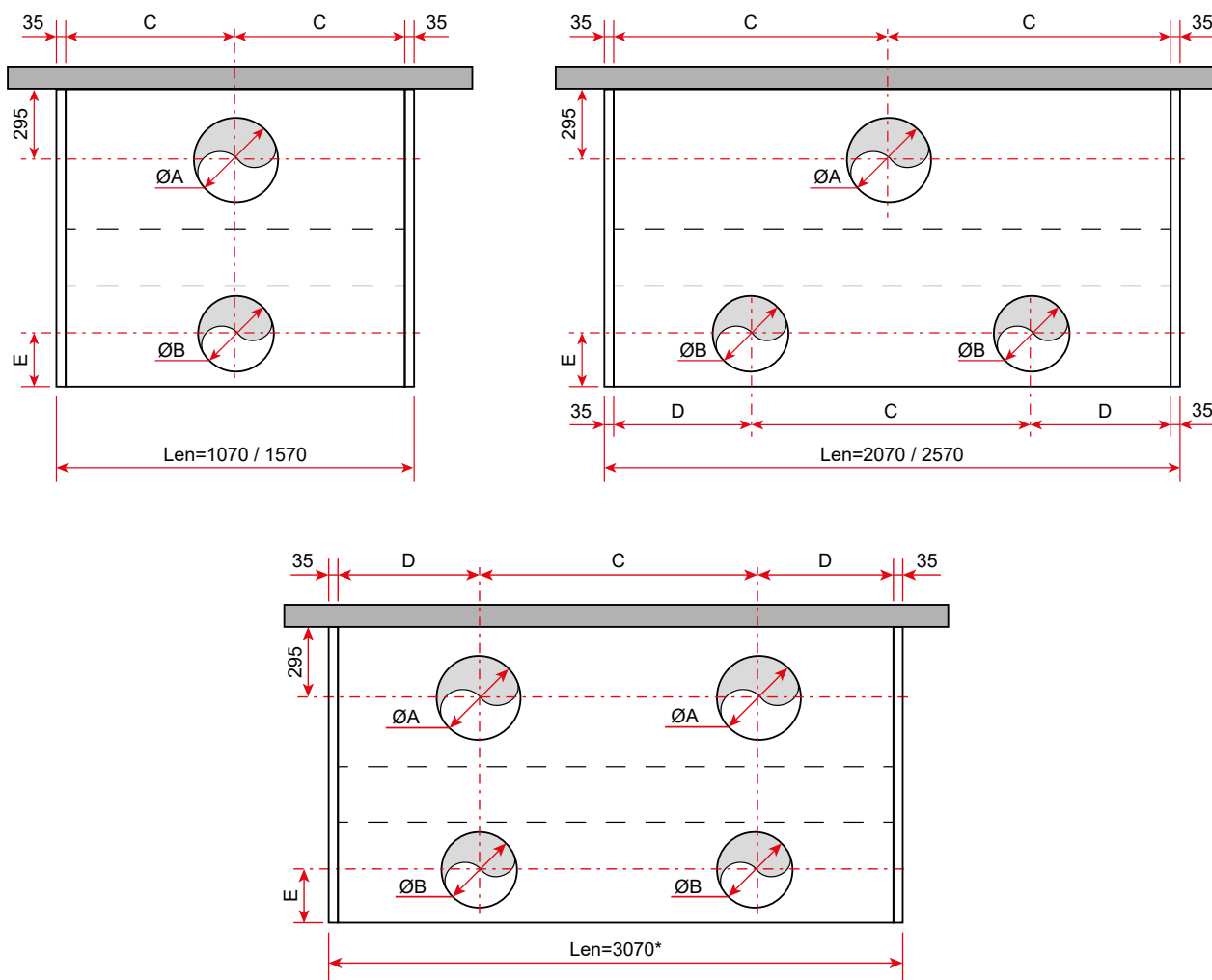
FIXING POINTS



TOP VIEW

HEXOTECH IDF

CONNECTIONS: Diameter and recommended number of hoops



Model	11 - 13 - 15 - 17			11	13 - 15 - 17		
Length (mm)	ØA	C	D	ØB	E	ØB	E
1070	315	500	-	315	217	315	262
1570	355	750	-	315		355	
2070	400	1000	500	315		315	
2570	400	1250	625	315		315	
3070*	355	1500	750	315		355	

ØA: recommended extraction diameter
 ØB: recommended negative pressure flow diameter
 - for depth 1120mm: ØB max 315
 - for depth 1240mm, 1445mm, 1650mm : ØB max 355
 *: Length 3070 mm single block
 Drilling and connection hoops as an option