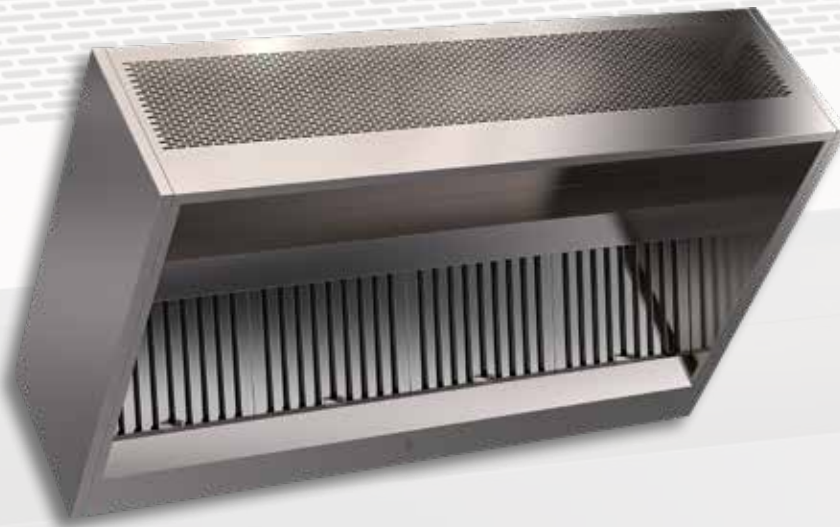




ISO 9001
BUREAU VERITAS
Certification



HEXOTECH IDC

Welded, negative pressure flow hood
H=400mm and 530mm

COMPLIANT WITH THE
NF EN 16282-2 STANDARD



VENTILATION OF PROFESSIONAL KITCHENS, A SPECIALIST AFFAIR.

HEXOTECH IDC

DESIGN / MANUFACTURE

HEXOTECH hoods are manufactured in compliance with the **NF EN 16282-2** standard.

| **Negative pressure HEXOTECH hoods are single block from 1070 to 3070mm.** Longer lengths are created by assembling single block units screwed together, with no visible fixings on the outer faces and in the extraction volume.

| **HEXOTECH IDC hoods are available in 2 heights:**

HEXOTECH IDC 40 : height 400 mm

HEXOTECH IDC 53 : height 530 mm

| **The join between the side gutter and the lower extractor band communicates and is welded.**

| **The extractor lower corners are welded,** providing perfect leak tightness.

| **There is a support profile built into each end of the single block unit,** making it possible to suspend it from ØM8 threaded rods.

| **All parts are manufactured from AISI 304 austenitic stainless steel (CN 18-10),** brushed finish 220 grade on both sides with PVC protection.

| **The front face is made using 12/10ths thickness.**

| **The side casing (ends)** are composed of a 35mm tray panel and a double skin. The panel corners are welded.

| **Baffle filters** 398x498x25mm with stainless steel frame and handle (flow of 600m³/h). **Optional HE filter** (flow of 500m³/h).

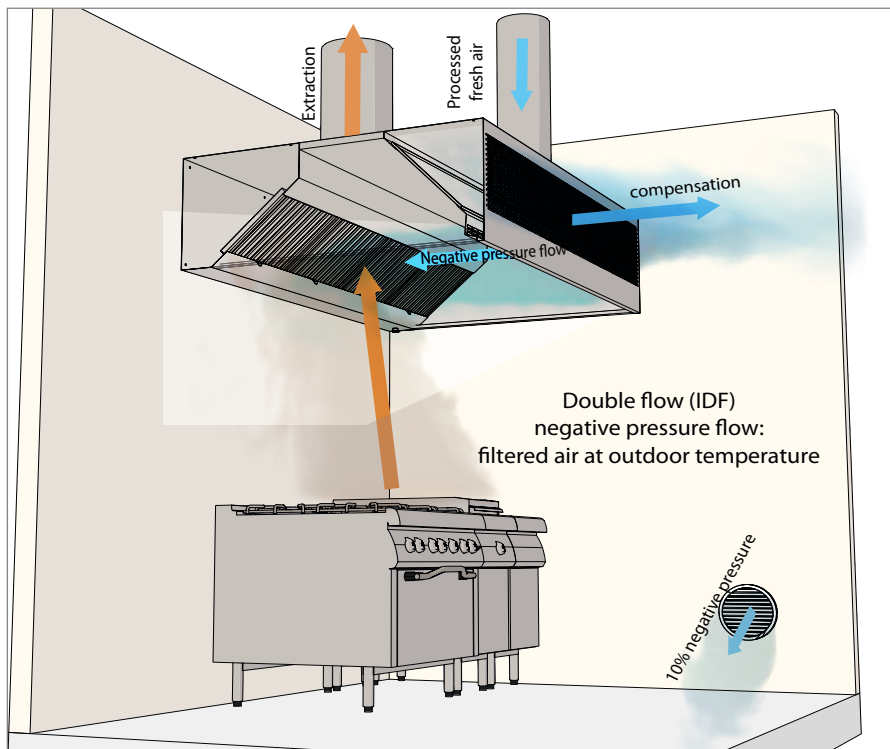
| Each single block unit is fitted with a **G3/4 stainless steel purge plug** in its lower part to drain off grease and condensates.

| **The insulated air blower plenum** in M1 foam, is fitted with a negative pressure air flow regulation device in its lower part. Access to this plenum is made easy by **removable panels** making module assembly easier.

| The front face has a flow diffuser system.

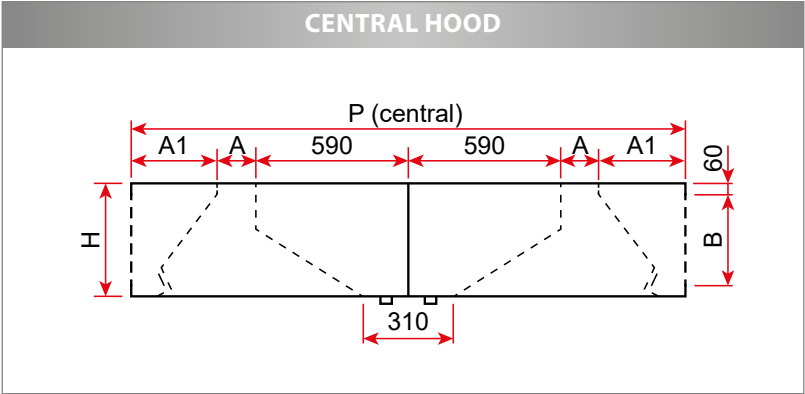
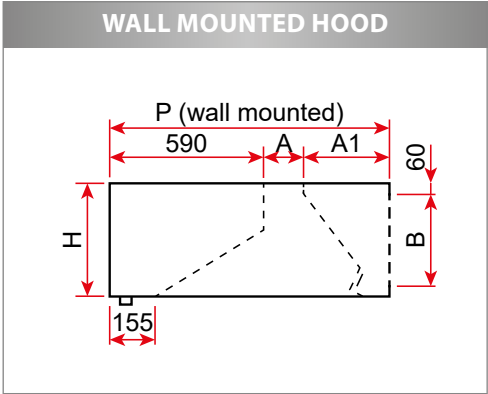
| The central hoods are composed of two back to back elements with a central separator, to be assembled together using the supplied hardware.

PRINCIPLE DIAGRAM



HEXOTECH IDC

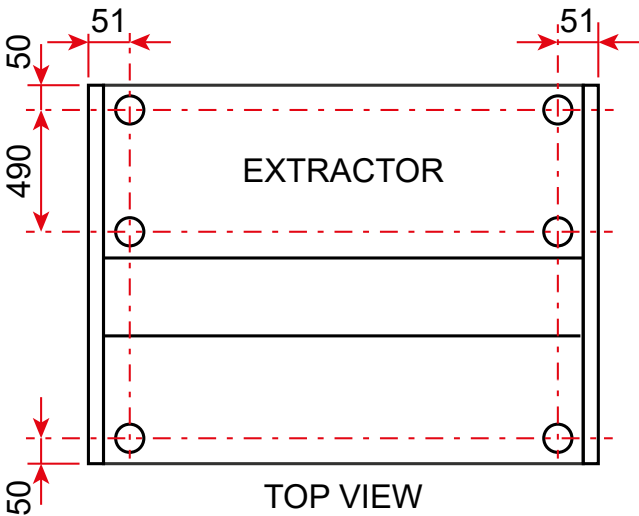
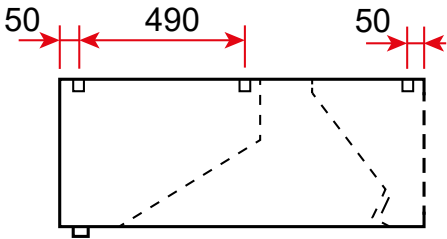
DIMENSIONS / WEIGHT



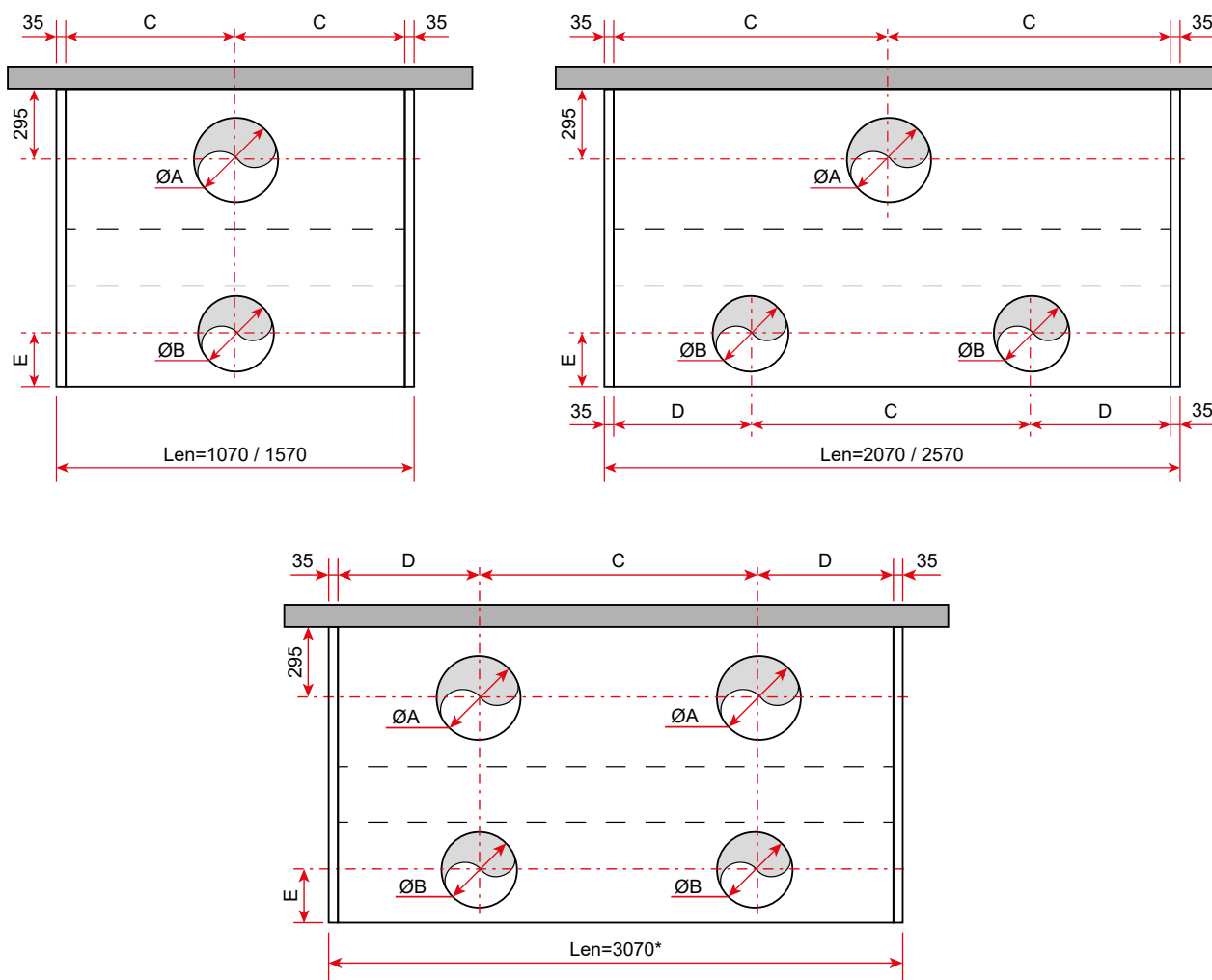
HEXOTECH IDC 40								
Model	wall mounted				central			
	11	13	15	17	22	26	30	34
H (mm)	400	400	400	400	400	400	400	400
A (mm)	200	200	405	610	200	200	405	610
A1 (mm)	330	450	450	450	330	450	450	450
B (mm)	172	172	172	172	172	172	172	172
D (mm)	1120	1240	1445	1650	2240	2480	2890	3300
Weight (kg/m)	66	72	81	88	132	144	162	176

HEXOTECH IDC 53								
Model	wall mounted				central			
	11	13	15	17	22	26	30	34
H (mm)	530	530	530	530	530	530	530	530
A (mm)	200	200	405	610	200	200	405	610
A1 (mm)	330	450	450	450	330	450	450	450
B (mm)	315	315	315	315	315	315	315	315
D (mm)	1120	1240	1445	1650	2240	2480	2890	3300
Weight (kg/m)	76	83	89	103	152	166	178	206

FIXING POINTS



CONNECTIONS: Diameter and recommended number of hoops



Model	11 - 13 - 15 - 17			11		13 - 15 - 17	
Length (mm)	ØA	C	D	ØB	E	ØB	E
1070	315	500	-	315	217	315	262
1570	355	750	-	315		355	
2070	400	1000	500	315		315	
2570	400	1250	625	315		315	
3070*	355	1500	750	315		355	

ØA: recommended extraction diameter
 ØB: recommended negative pressure flow diameter
 - for depth 1120mm: ØB max 315
 - for depth 1240mm, 1445mm, 1650mm : ØB max 355
 *: Length 3070 mm single block
 Drilling and connection hoops as an option