



# **CAPTINE**

Static Extractors / hoods  
H=290mm



VENTILATION OF PROFESSIONAL KITCHENS, A SPECIALIST AFFAIR.

# CAPTINE STATIC

## DESIGN / MANUFACTURE

**The CAPTINE range is single-block:**

- from 500 to 2500mm for wall mounted extractors and hoods (single block up to 3000mm possible as an option),
- from 500 to 3000mm for central extractors and hoods.

There are no visible fixings on the outer faces.

**The production method used, with folds on all visible parts,** gives a finish that is free of burrs and protruding parts.

**All visible parts are manufactured from AISI 304 austenitic stainless steel** (CN 18-10), brushed finish 220 grade on the 2 sides with PVC protection.

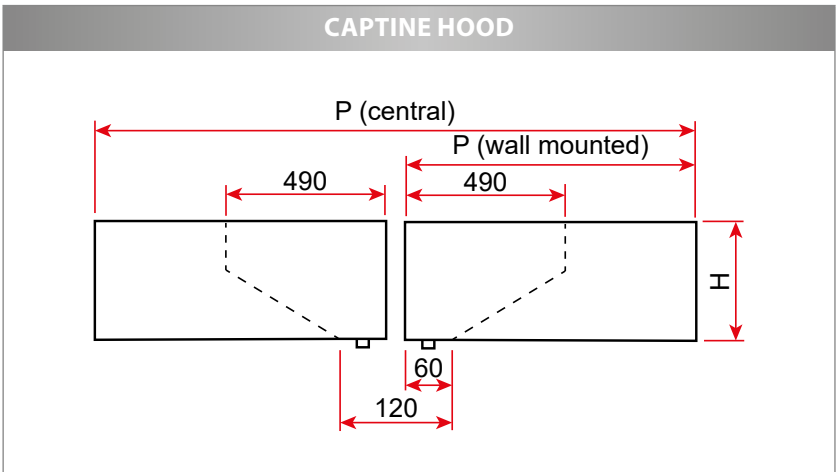
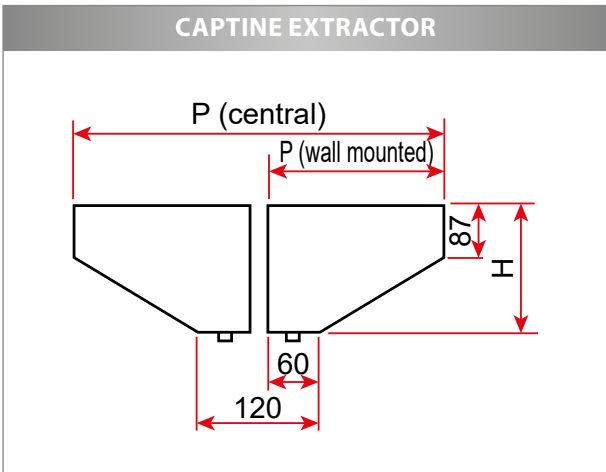
The lateral casing (sides) are assembled using heat-welded pins and nuts.

**Mesh filters** 398x498x25mm with stainless steel frame and handle, galvanised medium (flow of 1100m<sup>3</sup>/h per filter). **Optionally, full stainless steel filters** (flow of 1100m<sup>3</sup>/h per filter), **baffle filters** (flow of 600m<sup>3</sup>/h per filter) or **HE filter** (flow of 500 m<sup>3</sup>/h). Stainless steel 398x498x25mm neutral plates.

**Each single block extractor is leak tight** and fitted with a G3/8 stainless steel purge plug in its lower part to drain off grease and condensates.

The extractors and central hoods are composed of two back to back elements with a central separator, to be assembled together using the supplied hardware.

## DIMENSIONS / WEIGHT

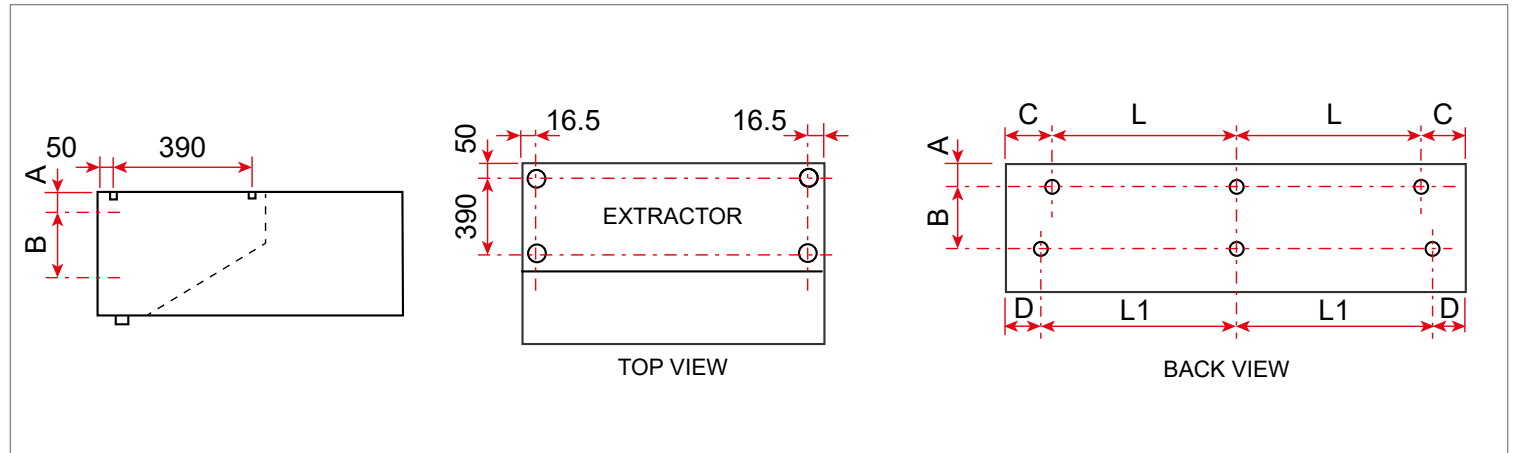


CAPTINE	Wall mounted			Central		
Model	05*	08	09	10*	15	18
D (mm)	490	750	895	980	1500	1790
H (mm)	290	290	290	290	290	290
Weight (kg/m)	22	26	28	44	52	56

\*: Extractor only

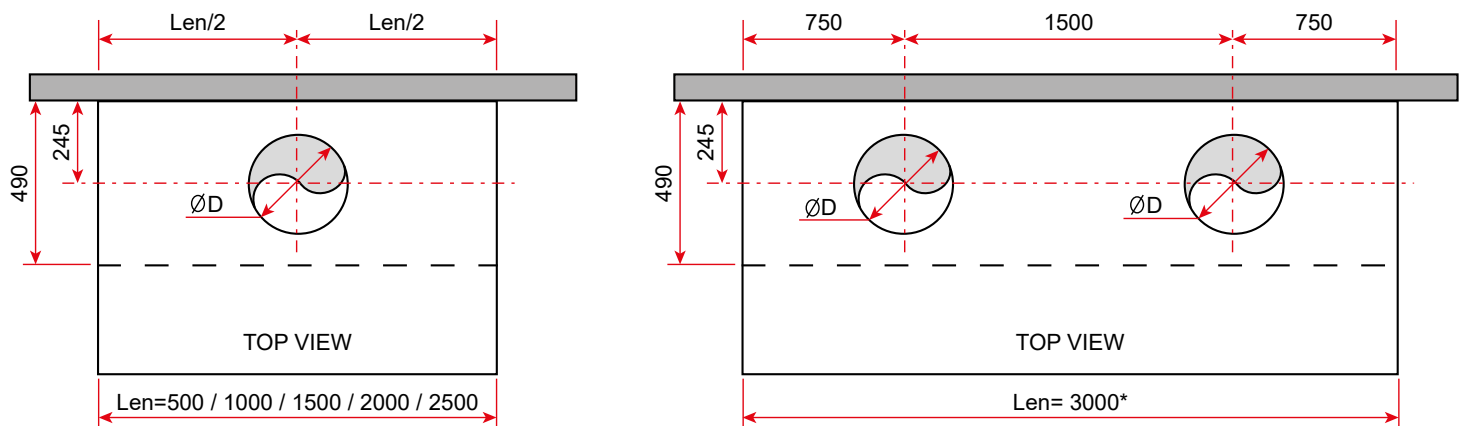
# CAPTINE STATIC

## FIXING POINTS



Length (mm)	A (mm)	B (mm)	C (mm)	D (mm)	L (mm)	L1 (mm)
500	50	208	100	30	300	440
1000			150		700	940
1500					3x400	3x480
2000					3x566	3x647
2500					3x733	3x813
3000					3x900	3x980

## CONNECTIONS: Diameter and recommended number of hoops



Length (mm)	500	1000	1500	2000	2500	3000*
ØD (mm)	315	315	355	400	400	355

\*: Length 3000 mm single block  
Drilling and connection hoops as an option