



CANTOLINE

Containment hoods
H=380mm and 530mm



VENTILATION OF PROFESSIONAL KITCHENS, A SPECIALIST AFFAIR.

CANTOLINE

DESIGN / MANUFACTURE

The CANTOLINE range is single-block from 500 to 2500mm (single block up to 3000mm available as an option). Longer lengths are created by assembling single block units screwed together, with no visible fixings on the outer faces and in the containment volume.

CANTOLINE hoods are available in two heights:

CANTOLINE 38: height = 380mm

CANTOLINE 53: height = 530mm

Crimped ØM8 nuts are built into each end of the unit, making it possible to suspend it from threaded rods.

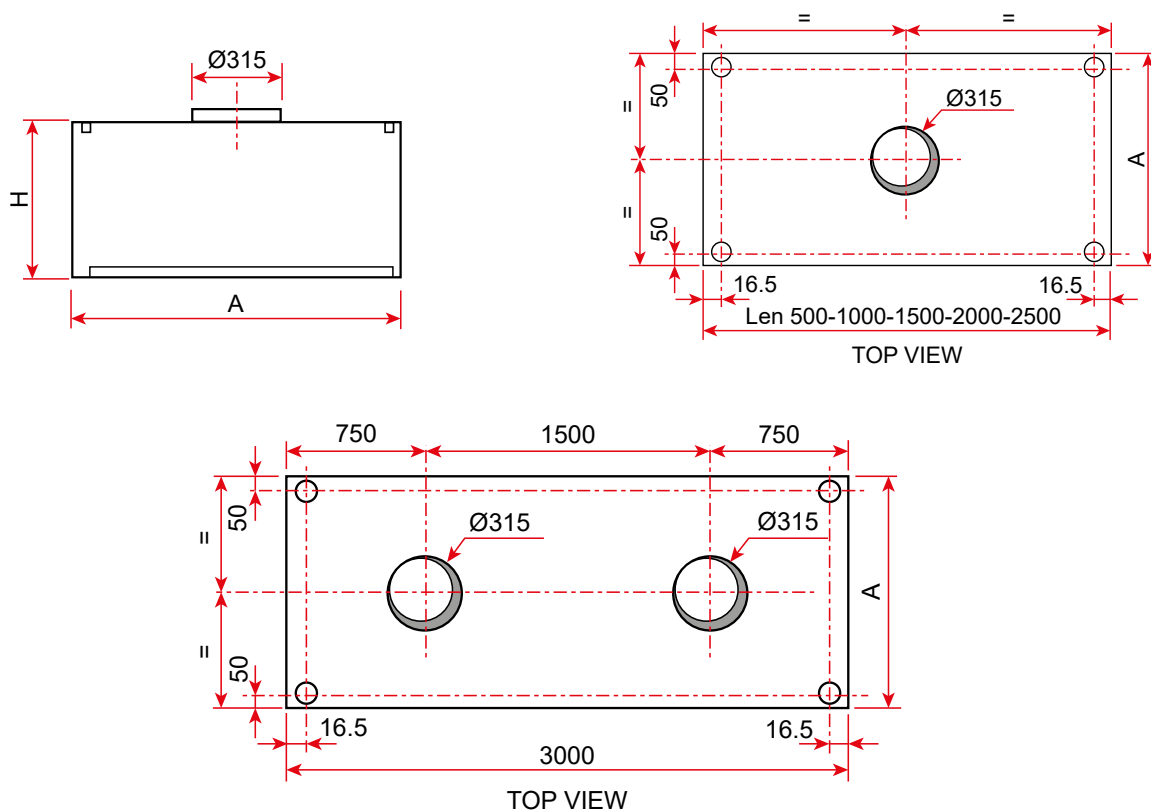
The production method used, with folds on all visible parts, gives a finish that is free of burrs and protruding parts.

All parts are manufactured from AISI 304 austenitic stainless steel (CN 18-10), brushed finish on both sides, 220 grade with PVC protection.

The design of the ends avoids all markings on the outer faces. They are assembled using heat-welded pins and nuts.

As standard, Ø315 connection hoop assembled.

DIMENSIONS / WEIGHT / FIXING POINTS / CONNECTIONS

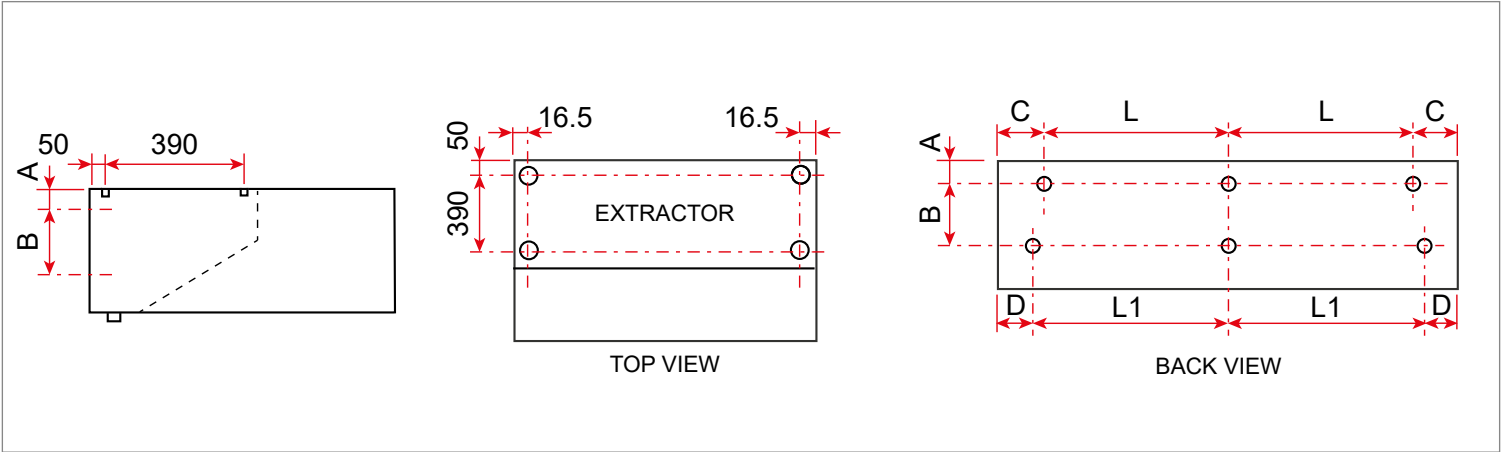


CANTOLINE 38	09	11	13	15	17
H (mm)	380				
A (mm)	915	1120	1240	1445	1650
Weight (kg/m)	21	24	26	29	32

CANTOLINE 53	09	11	13	15	17
H (mm)	530				
A (mm)	915	1120	1240	1445	1650
Weight (kg/m)	27	30	32	35	38

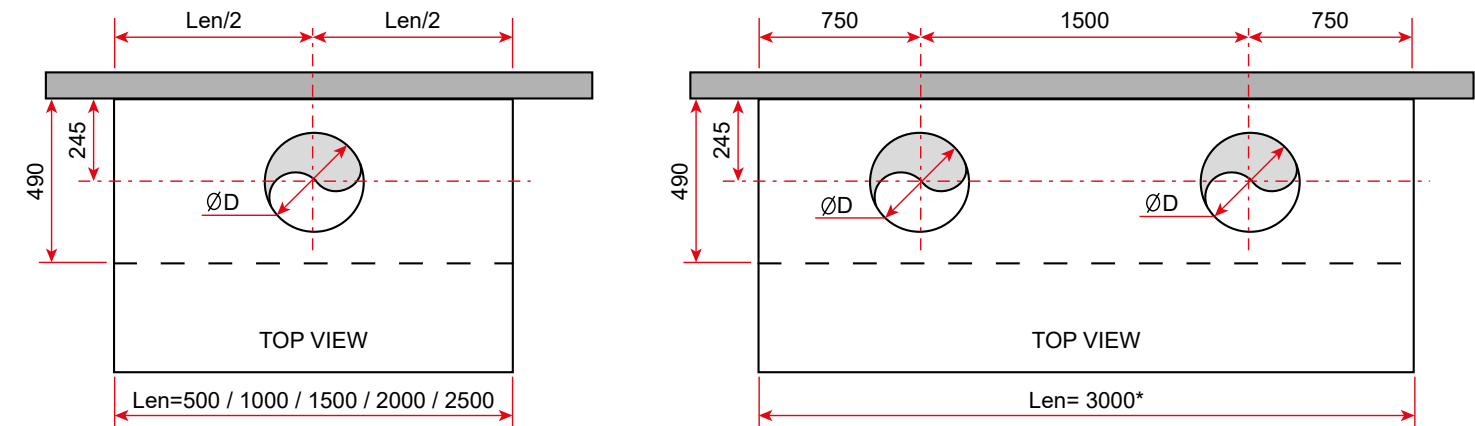
CAPTINE STATIC

FIXING POINTS



Length (mm)	A (mm)	B (mm)	C (mm)	D (mm)	L (mm)	L1 (mm)
500	50	208	100	30	300	440
1000			150		700	940
1500					3x400	3x480
2000					3x566	3x647
2500					3x733	3x813
3000					3x900	3x980

CONNECTIONS: Diameter and recommended number of hoops



Length (mm)	500	1000	1500	2000	2500	3000*
ØD (mm)	315	315	355	400	400	355

*: Length 3000 mm single block
Drilling and connection hoops as an option